

CATALOGUE
2 0 2 5



GRIP THE FUTURE
WITH ADVANCED TOOL HOLDERS

Your Partner in Precision & Performance



INDEX OF CONTENTS



NO.	DESCRIPTION	PAGE NO.
01	ARRIS - Company & Product Overview Tool holder Selection Guide	01-10
02	Precision Hydrogrip Chuck BT (MAS 403) - BT30/40/50 ABT (MAS 403) - ABT30/40/50 HSK-A (DIN 69893-1) - HSK50/63/100	11
03	Shrink Fit Technology Holder BT (MAS 403) - BT30/40/50 ABT (MAS 403) - ABT30/40/50 HSK-A (DIN 69893-1) - HSK50/63/100	12-13
04	HSK-A (DIN 69893-1) - HSK50/63/100 ER/FMA/SLA/MT	14-18
05	BT (MAS 403) - BT30/40/50 Die Mould Chuck - DMC ER/FMA/SLA/MT	19-26
06	ABT (MAS 403) - ABT30/40/50 ER/FMA/SLA/MT	27-30
07	CBK - Modular Boring adaptors BT (MAS 403) - BT30/40/50 SK (DIN 69871) - SK40/50	31-34
08	SK (DIN 69871) - SK40/50 ER/FMA/SLA/MT	35-38

NO.	DESCRIPTION	PAGE NO.
09	CAT (ANSI B5.5) - CAT40/50 ER/FMA/SLA/MT	39 - 41
10	ISO40 (DIN 2080) - ISO40/50 ER/FMA/SLA/MT	42 - 43
11	Boring Bar Blank Adaptor BT30/40/50 HSK50/63/100	44
12	Cylindrical Chuck - Straight shank ER8 to ER40	45
13	Accessories / Spares ERNUT Pull Stud Locking device Clamping kit Spanner	46 - 48
14	Inserted Cutting Tools APMT Inserted cutter body LNMU Inserted cutter body APMT Inserted FMC cutter body SDMT Inserted FMC cutter body	49 - 51

ARRIS TOOLING

- **ARRIS TOOLING** itself is synonym to precision technology. As it reflects technology blended with precision is the soul of our business.
- At our facility, a dedicated team of highly qualified and experienced professionals ensures prompt and effective service delivery to our esteemed clients. Our commitment to excellence is reflected in every aspect of our work, from production to customer care.

WE FIRMLY BELIEVE THAT OUR CUSTOMERS ARE THE CORNERSTONE OF OUR SUCCESS.

- With this in mind, exceeding their expectations and fulfilling their needs is our foremost objective. Our passion for customer satisfaction drives us to continually refine our processes and offerings, ensuring that we remain at the forefront of the industry.
- Experience the difference with us - where cutting-edge technology meets unmatched service, all at a competitive price. Welcome to Arris Tooling, where precision and reliability converge to exceed your expectations





VISION

- Create iconic and valued global brands
 - Constantly innovate and develop new product
 - Anticipate the needs of the customer by increasing the reach and range.
-



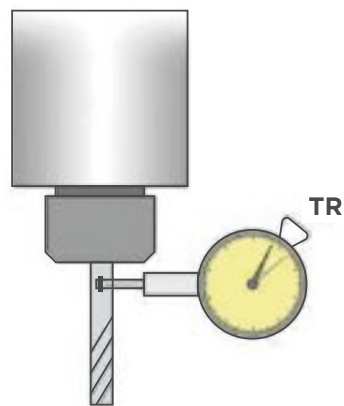
VALUE

- Integrity - do what I say and say what I do.
- Simplicity - be transparent
- Innovation - be exponential

ARRIS TOOLING

Specialize in creating high-performance spindle tools that empower manufacturers to achieve their production goals with unparalleled accuracy and efficiency, and according to **ISO 9001-2015** process standards.

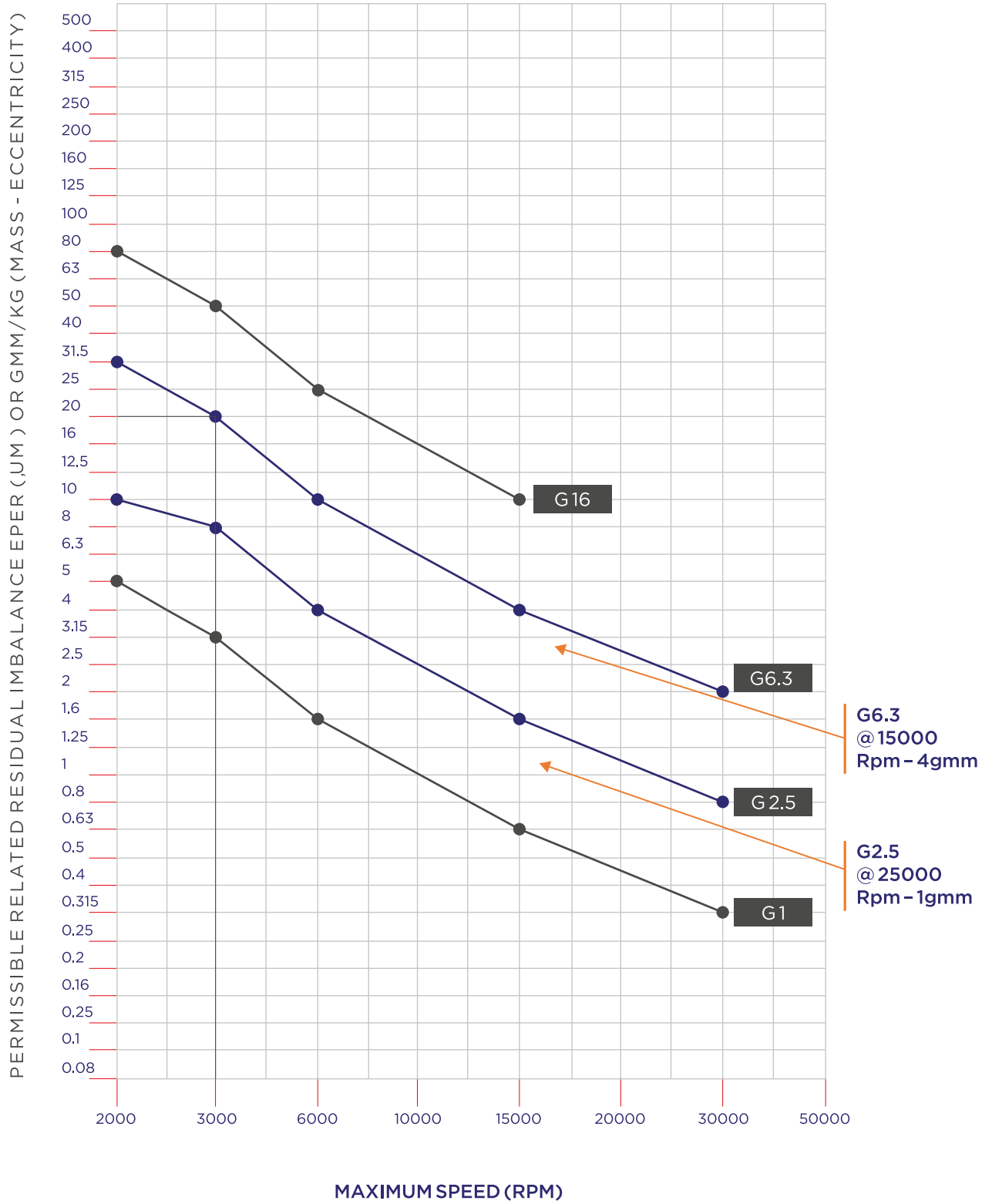
THE COST OF POOR TIR AND UNBALANCED HOLDER ON CUTTING TOOLING LIFE IS 20%



The Cost Of Poor **TIR** and Unbalanced Holder On Cutting Tooling Life is **20%**

DYNAMIC BALANCING

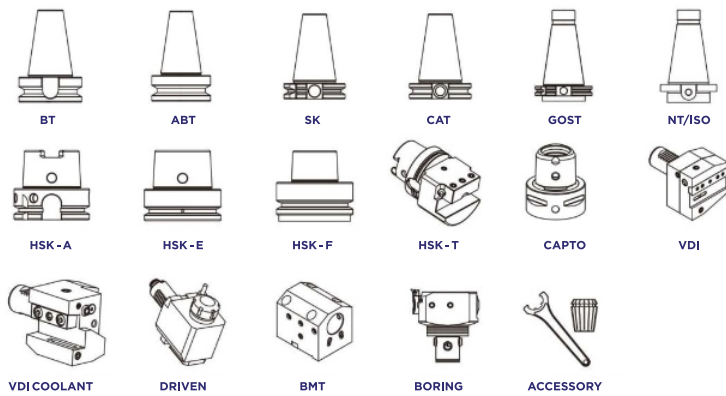
- Dynamic balancing on highly precision German make “HAIMER” machine at G6.3/G2.5 grade @15000/25000 rpm.
- Ideally, surface finish is determined by feed rates, depth of cut and spindle speed. However, surface finish also is influenced By background vibration caused by unbalance mass in tool holder
- Unbalance forces of tool holder can act like additional runout in the subsequent cutting tool
- Tool balance is a key factor to consider for optimizing your cutting tools' performance. Improperly balanced tools will Cause poor part finish, uneven tool wear, reduced tool life, noise and possible machine spindle failure and damage.
- The balance of a rotating tool clamping product is critical to machine spindle wear and cutting tool performance,



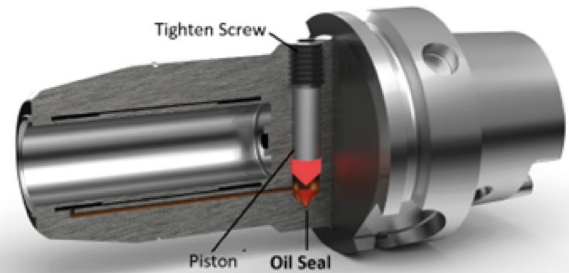
FRONT CLAMPING TOOL SELECTION

FRONT CLAMPING TOOL SELECTION					
	SIDE LOCK END MILL HOLDER	SHRINK FIT HOLDER	COLLET CHUCKS	MILLING CHUCKS	HYDRAULIC CHUCKS
<ul style="list-style-type: none"> ● Poor ● Good ● Better ● Best 					
RUNOUT @ 4XD	●	●	●	●	●
GRIPPING STRENGTH	●	●	●	●	●
PULLOUT SECURITY	●	●	●	●	●
SPEED	●	●	●	●	●
VIBRATION DAMPING	●	●	●	●	●
HANDLING	●	●	●	●	●

SPINDLE TAPER SELECTION



PRECISION HYDROULIC CHUCK



FEATURES & SELECTION GUIDE

- Arris – hydrogrip holder is very rigid and precisin.
- Tool shank with recesses not to use as it effects complete clamping in bore and increase Run out and balancing accuracy.
- Tool must be always clamped till minimum clamping depth specified as per size.
- Clamping torque cycle tested to the marks as per standard.
- Run out accuracy controlled so as to increase tool life.

HC Reduction Sleeve



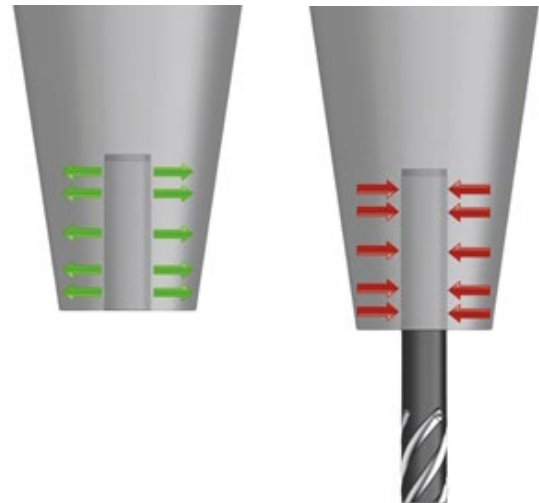
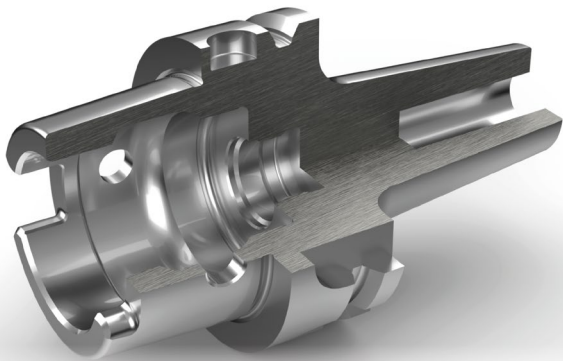
AVAILABLE TAPER MOUNTING

- BT (MAS 403)
- BBT (MAS 403)
- HSK - A (DIN 69893-1)
- SK (DIN 69871)
- CAT (ANSI B5.50)

BALANCING AND TIR

- Balanced at G2.5 @ 25000 rpm.
- Taper to bore run out less than 0.005 mm.

SHRINK FIT TECHNOLOGY HOLDER



BORE EXPANSION
BY HEATING

BORE SHRINK
BY COOLING

FEATURES & SELECTION GUIDE

- Arris – Shrink fit holder is more rigid toolholders for long-reach tools.
- Recommended to use for carbide shank only.
- Increased performance when using small carbide cutting tools.
- Tool must be always clamped till minimum clamping depth specified as per size.
- Clamping torque cycle tested to the marks as per standard.
- Run out accuracy controlled so as to increase tool life.

AVAILABLE TAPER MOUNTING

- BT (MAS 403)
- BBT (MAS 403)
- HSK – A (DIN 69893-1)
- SK (DIN 69871)
- CAT (ANSI B5.50)

HSK - HOLLOW SHANK - HIGH SPEED ADAPTOR



FEATURES & SELECTION GUIDE

- HSK adaptor is dual contact technology - taper and face both in contact with spindle clamping which results in more rigidity.
- Recommended for higher spindle rpm for better tool life.
- Run out accuracy controlled so as to increase tool life.

AVAILABLE TAPER MOUNTING

- HSK - A50 (DIN 69893-1)
- HSK - A63 (DIN 69893-1)
- HSK - A100 (DIN 69893-1)
- All with standard ER, FMA, SLA, Hydrogrip, Shrink fit etc...

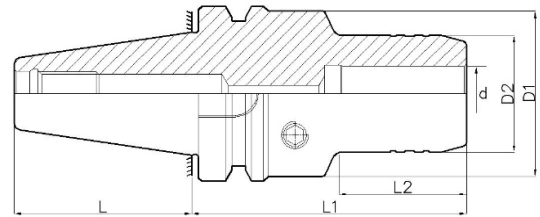
BALANCING AND TIR

- Balanced at G2.5 @ 25000 rpm.
- Taper to bore run out less than 0.005 mm.

HYDROGRIP HOLDER

RUN
OUT
≤0.005

G 2.5
25000
RPM



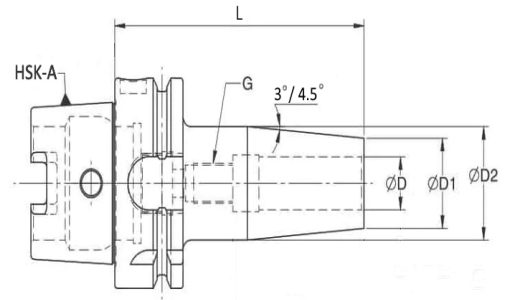
Shank Taper	Descriptions	D	L1 (mm)	ØD1 (mm)	ØD2 (mm)	L2 (mm)
BT30	BT30 HC 12 X 90	12	90	52	36	43
BT30	BT30 HC 20 X 100	20	100	52	45	50
BT40	BT40 HC 06 X 90	6	90	52	30	35
BT40	BT40 HC 08 X 90	8	90	52	32	35
BT40	BT40 HC 10 X 90	10	90	52	34	38
BT40	BT40 HC 12 X 90	12	90	52	36	43
BT40	BT40 HC 14 X 90	14	90	52	38	43
BT40	BT40 HC 16 X 90	16	90	52	40	43
BT40	BT40 HC 18 X 100	18	100	52	42	50
BT40	BT40 HC 20 X 100	20	100	52	45	50
BT50	BT50 HC 20 X 110	20	110	52	45	50
BT50	BT50 HC 32 X 120	32	120	70	63	60

ABT30	ABT30 HC 20 X 100	20	100	52	45	50
ABT40	ABT40 HC 20 X 100	20	100	52	45	50
ABT50	ABT50 HC 20 X 110	20	110	52	45	50
ABT50	ABT50 HC 32 X 120	32	120	70	63	60

HSK A63	HSK63A-HC20-100-25K AD+B	20	100	52	45	50
HSK A100	HSK100A-HC20-100-25K AD+B	20	100	52	45	50
HSK A100	HSK100A-HC32-110-25K AD+B	32	110	70	63	60

SK40	SK40 HC 20 X 100	20	100	52	45	50
SK50	SK50 HC 20 X 110	20	110	52	45	50
SK50	SK50 HC 32 X 120	32	120	70	63	60

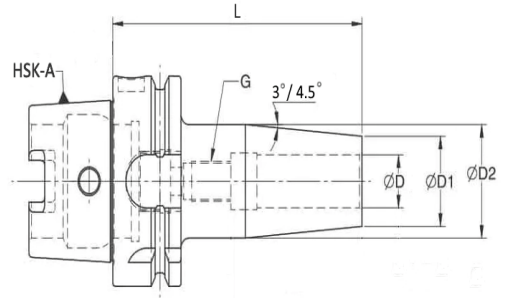
SHRINK FIT HOLDER - 3 / 4.5 Degree



Shank Taper	Descriptions	L (mm)	D (mm)	D1 (mm)	D2 (mm)	G
BT40-SFH	BT40 SFH06 X 90 (Slim-3 Degree)	90	6	12	18	M5
BT40-SFH	BT40 SFH06 X 120 (Slim-3 Degree)	120	6	12	21	M5
BT40-SFH	BT40 SFH08 X 90 (Slim-3 Degree)	90	8	14	20	M6
BT40-SFH	BT40 SFH08 X 120 (Slim-3 Degree)	120	8	14	23	M6
BT40-SFH	BT40 SFH10 X 90 (Slim-3 Degree)	90	10	16	22	M8
BT40-SFH	BT40 SFH10 X 120 (Slim-3 Degree)	120	10	16	25	M8
BT40-SFH	BT40 SFH12 X 90 (Slim-3 Degree)	90	12	18	24	M10
BT40-SFH	BT40 SFH12 X 120 (Slim-3 Degree)	120	12	18	27	M10
BT40-SFH	BT40 SFH14 X 90 (Slim-3 Degree)	90	14	20	26	M12
BT40-SFH	BT40 SFH14 X 120 (Slim-3 Degree)	120	14	20	29	M12
BT40-SFH	BT40 SFH16 X 90 (Slim-3 Degree)	90	16	22	28	M16
BT40-SFH	BT40 SFH16 X 120 (Slim-3 Degree)	120	16	22	31	M16

HSK-A 63	HSK-A 63SFH6 X 80 (4.5 Degree)	80	6	21	27	M5
HSK-A 63	HSK-A 63SFH6 X 80 (Slim-3 Degree)	80	6	12	17	M5
HSK-A 63	HSK-A 63SFH8 X 80 (4.5 Degree)	80	8	21	27	M6
HSK-A 63	HSK-A 63SFH8 X 80 (Slim-3 Degree)	80	8	14	19	M6
HSK-A 63	HSK-A 63SFH10 X 85 (4.5 Degree)	85	10	24	32	M8
HSK-A 63	HSK-A 63SFH12 X 90 (4.5 Degree)	90	12	24	32	M10
HSK-A 63	HSK-A 63SFH16 X 95 (4.5 Degree)	95	16	27	34	M12
HSK-A 63	HSK-A 63SFH20 X 100 (4.5 Degree)	100	20	33	42	M16

SHRINK
FIT HOLDER - 3 / 4.5 Degree

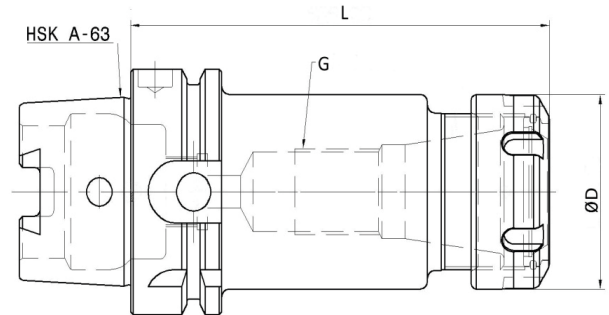


Shank Taper	Descriptions	L (mm)	D (mm)	D1 (mm)	D2 (mm)	G
HSK-A 100	HSK-A 100 SFH 6 X 85 (4.5 Degree)	85	6	21	27	M5
HSK-A 100	HSK-A 100 SFH 8 X 85 (4.5 Degree)	85	8	21	27	M6
HSK-A 100	HSK-A 100 SFH 10 X 90 (4.5 Degree)	90	10	24	32	M8
HSK-A 100	HSK-A 100 SFH 12 X 95 (4.5 Degree)	95	12	24	32	M10
HSK-A 100	HSK-A 100 SFH 16 X 100 (4.5 Degree)	100	16	27	34	M12
HSK-A 100	HSK-A 100 SFH 20 X 105 (4.5 Degree)	105	20	33	42	M16
HSK-A 100	HSK-A 100 SFH 25 X 115 (4.5 Degree)	115	25	44	53	M16
HSK-A 100	HSK-A 100 SFH 32 X 120 (4.5 Degree)	120	32	44	53	M16

HSK-A HOLDER (DIN 69893-1)

COLLET CHUCK ADAPTER

- ER (DIN 6499)

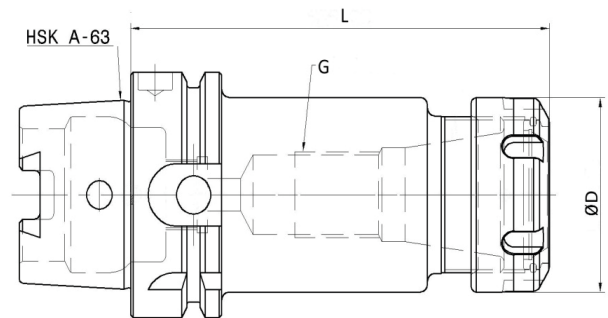


Type	Descriptions	Suitable Collet	L (mm)	ØD (mm)	G (mm)	NUT
HSK-A 50	HSK A-50 ER 16 X 100	ER 16	100	28	M10X1.5	A (Hex.Type)
HSK-A 50	HSK A-50 ER 20 X 100	ER 20	100	34	M10X1.5	A (Hex.Type)
HSK-A 50	HSK A-50 ER 25 X 100	ER 25	100	42	M18X1.5	UM (Round Type)
HSK-A 50	HSK A-50 ER 32 X 100	ER 32	100	50	M22X1.5	UM (Round Type)
HSK-A 50	HSK A-50 ER 40 X 110	ER 40	110	63	M30X1.5	UM (Round Type)

HSK-A 63	HSK A-63 ER 16 X 100	ER 16	100	28	M10X1.5	A (Hex.Type)
HSK-A 63	HSK A-63 ER 16 X 160	ER 16	160	28	M10X1.5	A (Hex.Type)
HSK-A 63	HSK A-63 ER 16 X 200	ER 16	200	28	M10X1.5	A (Hex.Type)
HSK-A 63	HSK A-63 ER 16 X 250	ER 16	250	28	M10X1.5	A (Hex.Type)
HSK-A 63	HSK A-63 ER 16 X 300	ER 16	300	28	M10X1.5	A (Hex.Type)
HSK-A 63	HSK A-63 ER 20 X 100	ER 20	100	34	M10X1.5	A (Hex.Type)
HSK-A 63	HSK A-63 ER 20 X 160	ER 20	160	34	M10X1.5	A (Hex.Type)
HSK-A 63	HSK A-63 ER 20 X 200	ER 20	200	34	M10X1.5	A (Hex.Type)
HSK-A 63	HSK A-63 ER 25 X 100	ER 25	100	42	M18X1.5	UM (Round Type)
HSK-A 63	HSK A-63 ER 25 X 160	ER 25	160	42	M18X1.5	UM (Round Type)
HSK-A 63	HSK A-63 ER 25 X 200	ER 25	200	42	M18X1.5	UM (Round Type)
HSK-A 63	HSK A-63 ER 25 X 250	ER 25	250	42	M18X1.5	UM (Round Type)
HSK-A 63	HSK A-63 ER 25 X 300	ER 25	300	42	M18X1.5	UM (Round Type)
HSK-A 63	HSK A-63 ER 32 X 100	ER 32	100	50	M22X1.5	UM (Round Type)
HSK-A 63	HSK A-63 ER 32 X 160	ER 32	160	50	M22X1.5	UM (Round Type)
HSK-A 63	HSK A-63 ER 32 X 200	ER 32	200	50	M22X1.5	UM (Round Type)
HSK-A 63	HSK A-63 ER 32 X 250	ER 32	250	50	M22X1.5	UM (Round Type)
HSK-A 63	HSK A-63 ER 32 X 300	ER 32	300	50	M22X1.5	UM (Round Type)

COLLET CHUCK ADAPTER

- ER (DIN 6499)

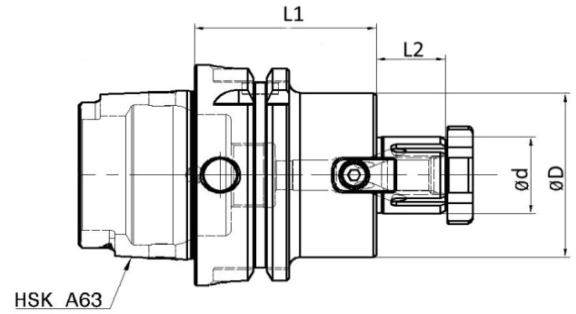


Type	Descriptions	Suitable Collet	L (mm)	ØD (mm)	G (mm)	NUT
HSK-A 63	HSK A-63 ER 40 X 100	ER 40	100	63	M30X1.5	UM (Round Type)
HSK-A 63	HSK A-63 ER 40 X 160	ER 40	160	63	M30X1.5	UM (Round Type)
HSK-A 63	HSK A-63 ER 40 X 200	ER 40	200	63	M30X1.5	UM (Round Type)
HSK-A 63	HSK A-63 ER 40 X 250	ER 40	250	63	M30X1.5	UM (Round Type)
HSK-A 63	HSK A-63 ER 40 X 300	ER 40	300	63	M30X1.5	UM (Round Type)

HSK-A 100	HSK A-100 ER 25 X 100	ER25	100	42	M18X1.5	UM (Round Type)
HSK-A 100	HSK A-100 ER 25 X 160	ER25	160	42	M18X1.5	UM (Round Type)
HSK-A 100	HSK A-100 ER 25 X 200	ER25	200	42	M18X1.5	UM (Round Type)
HSK-A 100	HSK A-100 ER 25 X 250	ER25	250	42	M18X1.5	UM (Round Type)
HSK-A 100	HSK A-100 ER 25 X 300	ER25	300	42	M18X1.5	UM (Round Type)
HSK-A 100	HSK A-100 ER 32 X 100	ER32	100	50	M22X1.5	UM (Round Type)
HSK-A 100	HSK A-100 ER 32 X 160	ER32	160	50	M22X1.5	UM (Round Type)
HSK-A 100	HSK A-100 ER 32 X 200	ER32	200	50	M22X1.5	UM (Round Type)
HSK-A 100	HSK A-100 ER 32 X 250	ER32	250	50	M22X1.5	UM (Round Type)
HSK-A 100	HSK A-100 ER 32 X 300	ER32	300	50	M22X1.5	UM (Round Type)
HSK-A 100	HSK A-100 ER 40 X 100	ER40	100	63	M30X1.5	UM (Round Type)
HSK-A 100	HSK A-100 ER 40 X 160	ER40	160	63	M30X1.5	UM (Round Type)
HSK-A 100	HSK A-100 ER 40 X 200	ER40	200	63	M30X1.5	UM (Round Type)
HSK-A 100	HSK A-100 ER 40 X 250	ER40	250	63	M30X1.5	UM (Round Type)
HSK-A 100	HSK A-100 ER 40 X 300	ER40	300	63	M30X1.5	UM (Round Type)

HSK-A HOLDER (DIN 69893-1)

FACE MILL ARBOUR - FMA (DIN 6357)



Type	Descriptions	Cutter Bore $\varnothing d$ (mm)	L1 (mm)	L2 (mm)	$\varnothing D$ (mm)
HSK-A 63	HSK A-63 FMH 22 X 50	22	50	19	48
HSK-A 63	HSK A-63 FMH 22 X 100	22	100	19	48
HSK-A 63	HSK A-63 FMH 27 X 55	27	55	21	58
HSK-A 63	HSK A-63 FMH 27 X 100	27	100	21	58
HSK-A 100	HSK A-100 FMH 22 X 100	22	100	19	48
HSK-A 100	HSK A-100 FMH 22 X 150	22	150	19	48
HSK-A 100	HSK A-100 FMH 22 X 200	22	200	19	48
HSK-A 100	HSK A-100 FMH 27 X 100	27	100	21	58
HSK-A 100	HSK A-100 FMH 27 X 150	27	150	21	58
HSK-A 100	HSK A-100 FMH 32 X 100	32	100	24	78
HSK-A 100	HSK A-100 FMH 32 X 150	32	150	24	78

Coolant Tube



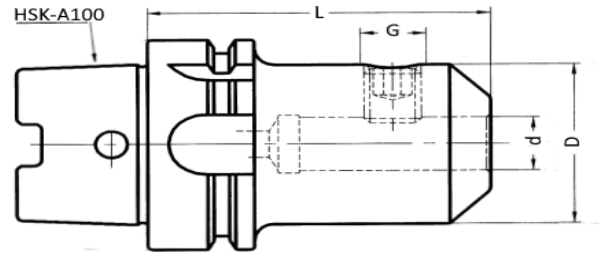
HSK Locking Device



HSK-A HOLDER (DIN 69893-1)

SIDE LOCK ARBOUR

- SLA (DIN 1835 B)



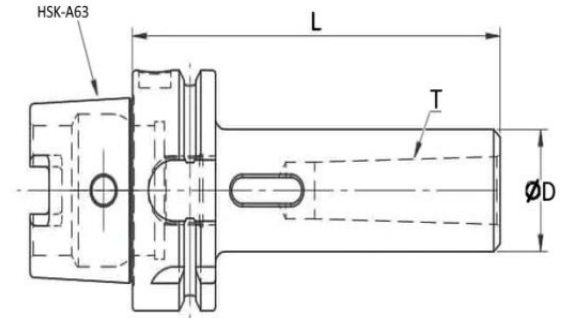
Type	Descriptions	L (mm)	Bore Ød (mm)	ØD (mm)	G (mm)	No. of Screw
HSK-A 63	HSK-A-63 SLA06 X 63	63	6	25	M6	1
HSK-A 63	HSK-A-63 SLA08 X 63	63	8	28	M8	1
HSK-A 63	HSK-A-63 SLA10 X 63	63	10	35	M10	1
HSK-A 63	HSK-A-63 SLA12 X 80	80	12	42	M12	1
HSK-A 63	HSK A-63 SLA 16X100	100	16	48	M12	1
HSK-A 63	HSK A-63 SLA 20 X 100	100	20	52	M16	1
HSK-A 63	HSK A-63 SLA 25 X 100	100	25	50	M12	2
HSK-A 63	HSK A-63 SLA 25 X 160	160	25	50	M12	2
HSK-A 63	HSK A-63 SLA 32 X 120	120	32	62	M16	2
HSK-A 63	HSK A-63 SLA 32 X 160	160	32	62	M16	2
HSK-A 63	HSK A-63 SLA 40 X 120	120	40	62	M16	2

HSK-A 100	HSK A-100 SLA 12 X 80	80	12	42	M12	1
HSK-A 100	HSK A-100 SLA 16 X 80	80	16	48	M12	1
HSK-A 100	HSK A-100 SLA 20 X 100	100	20	52	M12	1
HSK-A 100	HSK A-100 SLA 25 X 100	100	25	50	M12	2
HSK-A 100	HSK A-100 SLA 25 X 160	160	25	50	M12	2
HSK-A 100	HSK A-100 SLA 32 X 120	120	32	62	M16	2
HSK-A 100	HSK A-100 SLA 32 X 160	160	32	62	M16	2
HSK-A 100	HSK A-100 SLA 40 X 120	120	40	62	M16	2
HSK-A 100	HSK A-100 SLA 40 X 160	160	40	62	M16	2

HSK-A HOLDER (DIN 69893-1)

MORSE TAPER ADAPTER

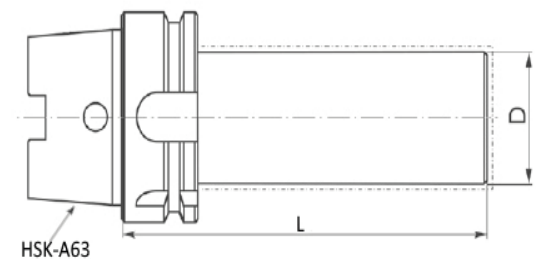
- MT (DIN 6383)



Type	Descriptions	L (mm)	$\varnothing D$ (mm)	Morse Tapper (T)
HSK-A 63	HSK A-63MT01X100	100	26	1
HSK-A 63	HSK A-63MT02X115	115	32	2
HSK-A 63	HSK A-63MT03X135	135	40	3
HSK-A 63	HSK A-63MT04X160	160	48	4

BLANK TOOL ADAPTER

ADAPTER

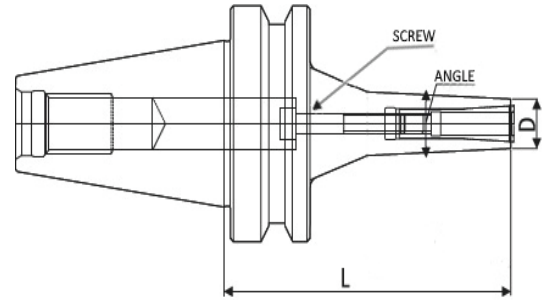


Type	Descriptions	L (mm)	$\varnothing D$ (mm)	Type
HSK-A 63	HSK A-63BLANK 160	160	63	Blank
HSK-A 63	HSK A-63BLANK 250	250	63	Blank
HSK-A 100	HSK A-100BLANK 250	250	80	Blank

DIE & MOULD CHUCK HOLDER

DIE & MOULD CHUCK

- DMC (3 Degree)



Type	Descriptions	Suitable Collet	L (mm)	D (mm)	Collet Range	Screw
BT40	DMC 6 X 90	DMC 6	90	13	3-6	M5
BT40	DMC 6 X 120	DMC 6	120	13	3-6	M5
BT40	DMC 6 X 150	DMC 6	150	13	3-6	M5
BT40	DMC 8 X 90	DMC 8	90	22	3-8	M6
BT40	DMC 8 X 120	DMC 8	120	22	3-8	M6
BT40	DMC 8 X 150	DMC 8	150	22	3-8	M6
BT40	DMC 10 X 90	DMC 10	90	28	3-10	M8
BT40	DMC 10 X 120	DMC 10	120	28	3-10	M8
BT40	DMC 10 X 150	DMC 10	150	28	3-10	M8
BT40	DMC 12 X 90	DMC 12	90	34	3-12	M10
BT40	DMC 12 X 120	DMC 12	120	34	3-12	M10
BT40	DMC 12 X 150	DMC 12	150	34	3-12	M10

DMC Collet 6,8,10,12

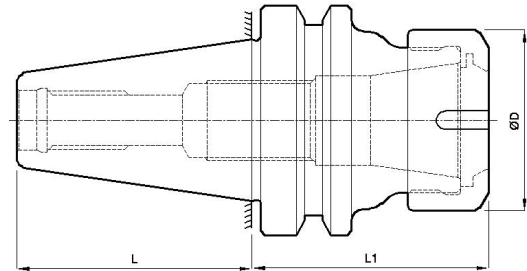


COLLET CHUCK ADAPTER

- ER (DIN 6499)

Run Out
≤0.005

G 6.3
15000
RPM



Shank Taper	Descriptions	Suitable Collet	L1 (mm)	L (mm)	ØD (mm)	NUT
BT30	COLLET CHUCK ER11X 70	ER11	70	48.4	19	A (Hex.Type)
BT30	COLLET CHUCK ER11X 100	ER11	100	48.4	19	A (Hex.Type)
BT30	COLLET CHUCK ER16 X 70	ER16	70	48.4	28	A (Hex.Type)
BT30	COLLET CHUCK ER16x 100	ER16	100	48.4	28	A (Hex.Type)
BT30	COLLET CHUCK ER20X 70	ER 20	70	48.4	34	A (Hex.Type)
BT30	COLLET CHUCK ER20 X 100	ER 20	100	48.4	34	A (Hex.Type)
BT30	COLLET CHUCK ER25 X 70	ER 25	70	48.4	42	UM (Round Type)
BT30	COLLET CHUCK ER25 X 100	ER 25	100	48.4	42	UM (Round Type)
BT30	COLLET CHUCK ER32 X 70	ER 32	70	48.4	50	UM (Round Type)
BT30	COLLET CHUCK ER32 X 100	ER 32	100	48.4	50	UM (Round Type)
BT30	COLLET CHUCK ER40 X 80	ER 40	80	48.4	63	UM (Round Type)
BT30	COLLET CHUCK ER40 X 100	ER 40	100	48.4	63	UM (Round Type)

BT40	COLLET CHUCK ER11A X 70	ER11	70	65.4	19	A (Hex.Type)
BT40	COLLET CHUCK ER11A X 100	ER11	100	65.4	19	A (Hex.Type)
BT40	COLLET CHUCK ER11A X 150	ER11	150	65.4	19	A (Hex.Type)
BT40	COLLET CHUCK ER16 X 70	ER16	70	65.4	28	A (Hex.Type)
BT40	COLLET CHUCK ER16 X 100	ER16	100	65.4	28	A (Hex.Type)
BT40	COLLET CHUCK ER16 X 120	ER16	120	65.4	28	A (Hex.Type)
BT40	COLLET CHUCK ER16 X 150	ER16	150	65.4	28	A (Hex.Type)
BT40	COLLET CHUCK ER16 X 200	ER16	200	65.4	28	A (Hex.Type)
BT40	COLLET CHUCK ER20X 70	ER 20	70	65.4	34	A (Hex.Type)
BT40	COLLET CHUCK ER20 X 100	ER 20	100	65.4	34	A (Hex.Type)
BT40	COLLET CHUCK ER20 X 120	ER 20	120	65.4	34	A (Hex.Type)
BT40	COLLET CHUCK ER20 X 150	ER 20	150	65.4	34	A (Hex.Type)

COLLET CHUCK ADAPTER

- ER (DIN 6499)

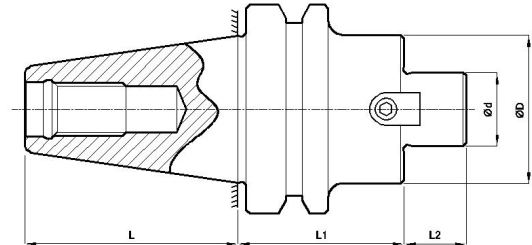
Run Out
≤0.005

G 6.3
15000
RPM

Shank Taper	Descriptions	Suitable Collet	L1 (mm)	L (mm)	ØD (mm)	NUT
BT40	COLLET CHUCK ER25 X 70	ER 25	70	65.4	42	UM (Round Type)
BT40	COLLET CHUCK ER25 X 100	ER 25	100	65.4	42	UM (Round Type)
BT40	COLLET CHUCK ER25 X 120	ER 25	120	65.4	42	UM (Round Type)
BT40	COLLET CHUCK ER25 X 150	ER 25	150	65.4	42	UM (Round Type)
BT40	COLLET CHUCK ER25 X 200	ER 25	200	65.4	42	UM (Round Type)
BT40	COLLET CHUCK ER32 X 70	ER 32	70	65.4	50	UM (Round Type)
BT40	COLLET CHUCK ER32 X 100	ER 32	100	65.4	50	UM (Round Type)
BT40	COLLET CHUCK ER32 X 120	ER 32	120	65.4	50	UM (Round Type)
BT40	COLLET CHUCK ER32 X 150	ER 32	150	65.4	50	UM (Round Type)
BT40	COLLET CHUCK ER32 X 200	ER 32	200	65.4	50	UM (Round Type)
BT40	COLLET CHUCK ER32 X 250	ER 32	250	65.4	50	UM (Round Type)
BT40	COLLET CHUCK ER32 X 300	ER 32	300	65.4	50	UM (Round Type)
BT40	COLLET CHUCK ER40 X 80	ER 40	80	65.4	63	UM (Round Type)
BT40	COLLET CHUCK ER40 X 100	ER 40	100	65.4	63	UM (Round Type)
BT40	COLLET CHUCK ER40 X 120	ER 40	120	65.4	63	UM (Round Type)
BT40	COLLET CHUCK ER40 X 150	ER 40	150	65.4	63	UM (Round Type)
BT40	COLLET CHUCK ER40 X 200	ER 40	200	65.4	63	UM (Round Type)
BT40	COLLET CHUCK ER40 X 250	ER 40	250	65.4	63	UM (Round Type)
BT50	COLLET CHUCK ER16 X 100	ER 16	100	101.8	28	A (Hex.Type)
BT50	COLLET CHUCK ER16 X 150	ER 16	150	101.8	28	A (Hex.Type)
BT50	COLLET CHUCK ER20 X 100	ER 20	100	101.8	34	A (Hex.Type)
BT50	COLLET CHUCK ER20 X 150	ER 20	150	101.8	34	A (Hex.Type)
BT50	COLLET CHUCK ER25 X 100	ER 25	100	101.8	42	UM (Round Type)
BT50	COLLET CHUCK ER25 X 150	ER 25	150	101.8	42	UM (Round Type)
BT50	COLLET CHUCK ER25 X 200	ER 25	200	101.8	42	UM (Round Type)
BT50	COLLET CHUCK ER25 X 250	ER 25	250	101.8	42	UM (Round Type)
BT50	COLLET CHUCK ER32 X 100	ER 32	100	101.8	50	UM (Round Type)
BT50	COLLET CHUCK ER32 X 150	ER 32	150	101.8	50	UM (Round Type)
BT50	COLLET CHUCK ER32 X 200	ER 32	200	101.8	50	UM (Round Type)
BT50	COLLET CHUCK ER32 X 250	ER 32	250	101.8	50	UM (Round Type)
BT50	COLLET CHUCK ER40 X 100	ER 40	100	101.8	63	UM (Round Type)
BT50	COLLET CHUCK ER40 X 150	ER 40	150	101.8	63	UM (Round Type)
BT50	COLLET CHUCK ER40 X 200	ER 40	200	101.8	63	UM (Round Type)
BT50	COLLET CHUCK ER40 X 250	ER 40	250	101.8	63	UM (Round Type)

FACE MILL ARBOUR

- FMA (DIN 6357)



Type	Descriptions	Cutter Bore Diameter $\varnothing d$ (mm)	L1 (mm)	L (mm)	L2 (mm)	$\varnothing D$ (mm)
BT30	FACE MILL ARBOUR 16 x 40	16	40	48.4	17	35
BT30	FACE MILL ARBOUR 16 x 80	16	80	48.4	17	35
BT30	FACE MILL ARBOUR 22 x 45	22	45	48.4	19	45
BT30	FACE MILL ARBOUR 22 x 90	22	90	48.4	19	45
BT30	FACE MILL ARBOUR 27 x 45	27	45	48.4	21	52
BT30	FACE MILL ARBOUR 27 x 90	27	90	48.4	21	52
BT30	FACE MILL ARBOUR 32 x 90	32	90	48.4	21	58

BT40	FACE MILL ARBOUR 16 x 60	16	60	65.4	17	35
BT40	FACE MILL ARBOUR 16 x 100	16	100	65.4	17	35
BT40	FACE MILL ARBOUR 16 x 150	16	150	65.4	17	35
BT40	FACE MILL ARBOUR 16 x 200	16	150	65.4	17	35
BT40	FACE MILL ARBOUR 22 x 50	22	50	65.4	19	45
BT40	FACE MILL ARBOUR 22 x 100	22	100	65.4	19	45
BT40	FACE MILL ARBOUR 22 x 150	22	150	65.4	19	45
BT40	FACE MILL ARBOUR 22 x 200	22	200	65.4	19	45
BT40	FACE MILL ARBOUR 22 x 250	22	250	65.4	19	45
BT40	FACE MILL ARBOUR 22 x 300	22	300	65.4	19	45
BT40	FACE MILL ARBOUR 22 x 350	22	350	65.4	19	45
BT40	FACE MILL ARBOUR 27 x 60	27	60	65.4	21	52
BT40	FACE MILL ARBOUR 27 x 100	27	100	65.4	21	52
BT40	FACE MILL ARBOUR 27 x 150	27	150	65.4	21	52
BT40	FACE MILL ARBOUR 27 x 200	27	200	65.4	21	52
BT40	FACE MILL ARBOUR 27 x 250	27	250	65.4	21	52
BT40	FACE MILL ARBOUR 27 x 300	27	300	65.4	21	52

FACE MILL ARBOUR

- FMA (DIN 6357)

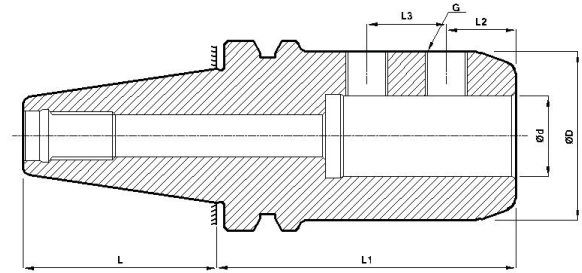


Type	Descriptions	Cutter Bore Diameter $\varnothing d$ (mm)	L1 (mm)	L (mm)	L2 (mm)	$\varnothing D$ (mm)
BT40	FACE MILL ARBOUR 32x70	32	70	65.4	24	58
BT40	FACE MILL ARBOUR 32x100	32	100	65.4	24	58
BT40	FACE MILL ARBOUR 32x150	32	150	65.4	24	58
BT40	FACE MILL ARBOUR 40x70	40	70	65.4	27	63
BT40	FACE MILL ARBOUR 40x100	40	100	65.4	27	63
BT40	FACE MILL ARBOUR 40x150	40	150	65.4	27	63

BT50	FACE MILL ARBOUR 16x60	16	60	101.8	17	35
BT50	FACE MILL ARBOUR 16x100	16	100	101.8	17	35
BT50	FACE MILL ARBOUR 16x150	16	150	101.8	17	35
BT50	FACE MILL ARBOUR 16x200	16	200	101.8	17	35
BT50	FACE MILL ARBOUR 22x60	22	60	101.8	19	45
BT50	FACE MILL ARBOUR 22x100	22	100	101.8	19	45
BT50	FACE MILL ARBOUR 22x150	22	150	101.8	19	45
BT50	FACE MILL ARBOUR 22x200	22	200	101.8	19	45
BT50	FACE MILL ARBOUR 22x250	22	250	101.8	19	45
BT50	FACE MILL ARBOUR 22x300	22	300	101.8	19	45
BT50	FACE MILL ARBOUR 27x60	27	60	101.8	21	52
BT50	FACE MILL ARBOUR 27x100	27	100	101.8	21	52
BT50	FACE MILL ARBOUR 27x150	27	150	101.8	21	52
BT50	FACE MILL ARBOUR 27x200	27	200	101.8	21	52
BT50	FACE MILL ARBOUR 27x250	27	250	101.8	21	52
BT50	FACE MILL ARBOUR 27x300	27	300	101.8	21	52
BT50	FACE MILL ARBOUR 32x75	32	75	101.8	24	58
BT50	FACE MILL ARBOUR 32x100	32	100	101.8	24	58
BT50	FACE MILL ARBOUR 32x150	32	150	101.8	24	58
BT50	FACE MILL ARBOUR 32x200	32	200	101.8	24	58
BT50	FACE MILL ARBOUR 32x250	32	250	101.8	24	58
BT50	FACE MILL ARBOUR 40x70	40	75	101.8	27	70
BT50	FACE MILL ARBOUR 40x100	40	100	101.8	27	70
BT50	FACE MILL ARBOUR 40x150	40	150	101.8	27	70
BT50	FACE MILL ARBOUR 40x200	40	200	101.8	27	70
BT50	FACE MILL ARBOUR 40x250	40	250	101.8	27	70

SIDELOCK ARBOR

- SLA (DIN 6359)



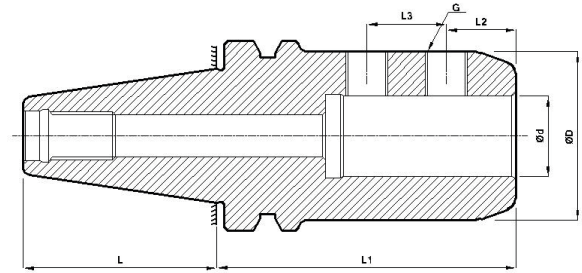
PIC. 2

Type	Descriptions	Bore Ød (mm)	L1 (mm)	L (mm)	L2 (mm)	L3 (mm)	ØD (mm)	G
BT30	SIDELOCK 10 X 50	10	50	48.4	20	-	35	M8
BT30	SIDELOCK 12 X 50	12	50	48.4	22	-	42	M10
BT30	SIDELOCK 16 X 63	16	63	48.4	23	-	48	M16
BT30	SIDELOCK 20 X 63	20	63	48.4	24	-	52	M16
BT30	SIDELOCK 25 X 80	25	80	48.4	24	-	65	M16
BT30	SIDELOCK 32 X 90	32	90	48.4	24	-	65	M16

BT40	SIDELOCK 10 X 63	10	63	65.4	20	-	35	M8
BT40	SIDELOCK 12 X 63	12	63	65.4	22	-	42	M10
BT40	SIDELOCK 16 X 63	16	63	65.4	23	-	48	M12
BT40	SIDELOCK 16 X 120	16	120	65.4	23	-	48	M12
BT40	SIDELOCK 20 X 63	20	63	65.4	24	-	52	M16
BT40	SIDELOCK 20 X 120	20	120	65.4	24	-	52	M16
BT40	SIDELOCK 25 X 90	25	90	65.4	24	25	50	M16
BT40	SIDELOCK 25 X 150	25	150	65.4	24	25	50	M16
BT40	SIDELOCK 32 X 60	32	60	65.4	24	28	56	M16
BT40	SIDELOCK 32 X 100	32	100	65.4	24	28	62.3	M16
BT40	SIDELOCK 32 X 150	32	150	65.4	24	28	62.3	M16
BT40	SIDELOCK 40 X 100	40	100	65.4	25	28	62.5	M16
BT40	SIDELOCK 40 X 150	40	150	65.4	25	28	62.5	M16

SIDELOCK ARBOR

- SLA (DIN 6359)

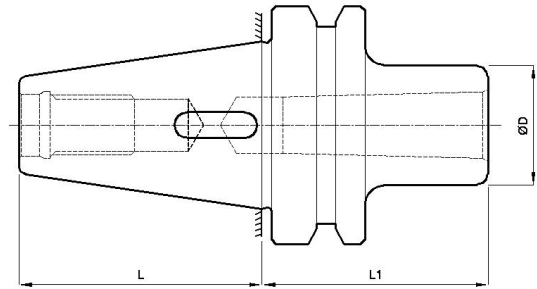


PIC. 2

Type	Descriptions	Bore Ød (mm)	L1 (mm)	L (mm)	L2 (mm)	L3 (mm)	ØD (mm)	G
BT50	SIDELOCK 16 X 85	16	90	101.8	24	-	48	M12
BT50	SIDELOCK 16 X 150	16	150	101.8	24	-	48	M12
BT50	SIDELOCK 16 X 200	16	200	101.8	24	-	48	M12
BT50	SIDELOCK 20 X 100	20	100	101.8	24	-	52	M16
BT50	SIDELOCK 20 X 150	20	150	101.8	24	-	52	M16
BT50	SIDELOCK 20 X 200	20	200	101.8	24	-	52	M16
BT50	SIDELOCK 25 X 100	25	100	101.8	24	25	65	M16
BT50	SIDELOCK 25 X 150	25	150	101.8	24	25	65	M16
BT50	SIDELOCK 25 X 200	25	200	101.8	24	25	65	M16
BT50	SIDELOCK 32 X 105	32	105	101.8	24	28	72	M16
BT50	SIDELOCK 32 X 150	32	150	101.8	24	28	72	M16
BT50	SIDELOCK 32 X 200	32	200	101.8	24	28	72	M16
BT50	SIDELOCK 40 X 105	40	105	101.8	25	28	72	M16
BT50	SIDELOCK 40 X 150	40	150	101.8	25	28	72	M16
BT50	SIDELOCK 40 X 200	40	200	101.8	25	28	72	M16
BT50	SIDELOCK 50 X 100	50	100	101.8	25	28	82	M16
BT50	SIDELOCK 50 X 150	50	150	101.8	25	28	82	M16

REDUCTION SOCKET

- MT (DIN 6383)



Type	Descriptions	BORE	L1 (mm)	L (mm)	$\varnothing D$ (mm)
BT30	REDUCTION SOCKET MT1X 45	MT-1	45	48.4	25
BT30	REDUCTION SOCKET MT2X 60	MT-2	60	48.4	32
BT30	REDUCTION SOCKET MT3X 75	MT-3	75	48.4	40

BT40	REDUCTION SOCKET MT1X45	MT-1	45	65.4	25
BT40	REDUCTION SOCKET MT2X60	MT-2	60	65.4	32
BT40	REDUCTION SOCKET MT3X75	MT-3	75	65.4	40
BT40	REDUCTION SOCKET MT4X95	MT-4	95	65.4	48

BT50	REDUCTION SOCKET MT1X45	MT-1	45	101.8	25
BT50	REDUCTION SOCKET MT1X120	MT-1	120	101.8	25
BT50	REDUCTION SOCKET MT2X45	MT-2	45	101.8	32
BT50	REDUCTION SOCKET MT2X135	MT-2	135	101.8	32
BT50	REDUCTION SOCKET MT3X60	MT-3	60	101.8	40
BT50	REDUCTION SOCKET MT3X155	MT-3	155	101.8	40
BT50	REDUCTION SOCKET MT4X85	MT-4	85	101.8	48
BT50	REDUCTION SOCKET MT4X180	MT-4	180	101.8	48
BT50	REDUCTION SOCKET MT5x100	MT-5	100	101.8	48
BT50	REDUCTION SOCKET MT5x220	MT-5	220	101.8	48

ABT-DUAL CONTACT HOLDERS (MAS 403)

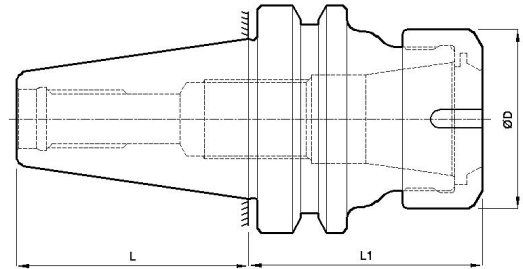


ABT COLLET CHUCK ADAPTER

- ER (DIN 6499)

Run Out
≤0.005

G 6.3
15000
RPM

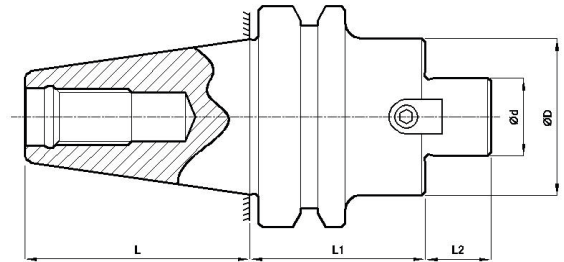


Shank Taper	Descriptions	Suitable Collet	L1 (mm)	L (mm)	ØD (mm)	NUT
ABT40	ABT COLLET CHUCK ER16 X 70	ER16	70	65	28	A (Hex.Type)
ABT40	ABT COLLET CHUCK ER16 X 100	ER16	100	65	28	A (Hex.Type)
ABT40	ABT COLLET CHUCK ER16 X 150	ER16	150	65	28	A (Hex.Type)
ABT40	ABT COLLET CHUCK ER20 X 70	ER 20	70	65	34	A (Hex.Type)
ABT40	ABT COLLET CHUCK ER20 X 100	ER 20	100	65	34	A (Hex.Type)
ABT40	ABT COLLET CHUCK ER20 X 150	ER 20	150	65	34	A (Hex.Type)
ABT40	ABT COLLET CHUCK ER25 X 70	ER 25	70	65	42	UM (Round Type)
ABT40	ABT COLLET CHUCK ER25 X 100	ER 25	100	65	42	UM (Round Type)
ABT40	ABT COLLET CHUCK ER25 X 150	ER 25	150	65	42	UM (Round Type)
ABT40	ABT COLLET CHUCK ER32 X 70	ER 32	70	65	50	UM (Round Type)
ABT40	ABT COLLET CHUCK ER32 X 100	ER 32	100	65	50	UM (Round Type)
ABT40	ABT COLLET CHUCK ER32 X 150	ER 32	150	65	50	UM (Round Type)
ABT40	ABT COLLET CHUCK ER40 X 80	ER 40	80	65	63	UM (Round Type)
ABT40	ABT COLLET CHUCK ER40 X 100	ER 40	100	65	63	UM (Round Type)
ABT40	ABT COLLET CHUCK ER40 X 150	ER 40	150	65	63	UM (Round Type)

ABT50	ABT COLLET CHUCK ER16 X 100	ER16	100	101.8	28	A (Hex.Type)
ABT50	ABT COLLET CHUCK ER16 X 150	ER16	150	101.8	28	A (Hex.Type)
ABT50	ABT COLLET CHUCK ER20 X 100	ER 20	100	101.8	34	A (Hex.Type)
ABT50	ABT COLLET CHUCK ER20 X 150	ER 20	150	101.8	34	A (Hex.Type)
ABT50	ABT COLLET CHUCK ER25 X 100	ER 25	100	101.8	42	UM (Round Type)
ABT50	ABT COLLET CHUCK ER25 X 150	ER 25	150	101.8	42	UM (Round Type)
ABT50	ABT COLLET CHUCK ER32 X 100	ER 32	100	101.8	42	UM (Round Type)
ABT50	ABT COLLET CHUCK ER32 X 150	ER 32	150	101.8	42	UM (Round Type)
ABT50	ABT COLLET CHUCK ER40 X 100	ER 40	100	101.8	50	UM (Round Type)
ABT50	ABT COLLET CHUCK ER40 X 150	ER 40	150	101.8	50	UM (Round Type)

ABT FACE MILL ARBOUR

- FMA (DIN 6357)



Type	Descriptions	Cutter Bore Diameter $\varnothing d$ (mm)	L1 (mm)	L (mm)	L2 (mm)	$\varnothing D$ (mm)
ABT40	ABT FACE MILL ARBOUR 22x50	22	50	65.4	19	45
ABT40	ABT FACE MILL ARBOUR 22x100	22	100	65.4	19	45
ABT40	ABT FACE MILL ARBOUR 22x150	22	150	65.4	19	45
ABT40	ABT FACE MILL ARBOUR 27x60	27	60	65.4	21	52
ABT40	ABT FACE MILL ARBOUR 27x100	27	100	65.4	21	52
ABT40	ABT FACE MILL ARBOUR 27x150	27	150	65.4	21	52
ABT40	ABT FACE MILL ARBOUR 32x70	32	70	65.4	24	58
ABT40	ABT FACE MILL ARBOUR 32x100	32	100	65.4	24	58
ABT40	ABT FACE MILL ARBOUR 32x150	32	150	65.4	24	58
ABT40	ABT FACE MILL ARBOUR 40x70	40	70	65.4	27	63
ABT40	ABT FACE MILL ARBOUR 40x100	40	100	65.4	27	63
ABT40	ABT FACE MILL ARBOUR 40x150	40	150	65.4	27	63

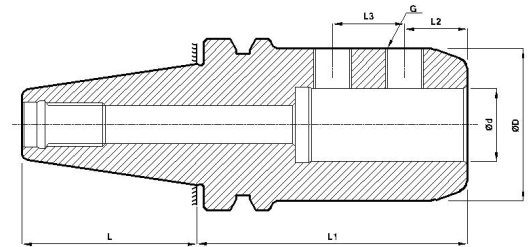
ABT50	ABT FACE MILL ARBOUR 22x100	22	100	101.8	19	45
ABT50	ABT FACE MILL ARBOUR 22x150	22	150	101.8	19	45
ABT50	ABT FACE MILL ARBOUR 22x200	22	200	101.8	19	45
ABT50	ABT FACE MILL ARBOUR 27x60	27	60	101.8	21	52
ABT50	ABT FACE MILL ARBOUR 27x100	27	100	101.8	21	52
ABT50	ABT FACE MILL ARBOUR 27x150	27	150	101.8	21	52
ABT50	ABT FACE MILL ARBOUR 32x75	32	75	101.8	24	58
ABT50	ABT FACE MILL ARBOUR 32x100	32	100	101.8	24	58
ABT50	ABT FACE MILL ARBOUR 32x150	32	150	101.8	24	58
ABT50	ABT FACE MILL ARBOUR 40x70	40	70	101.8	27	70
ABT50	ABT FACE MILL ARBOUR 40x100	40	100	101.8	27	70
ABT50	ABT FACE MILL ARBOUR 40x150	40	150	101.8	27	70

ABT-DUAL CONTACT HOLDERS (MAS 403)



SIDE LOCK ARBOR

- SLA (DIN 6359)



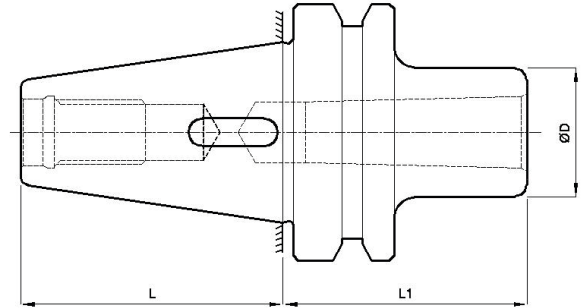
PIC. 2

Type	Descriptions	Bore $\varnothing d$ (mm)	L1 (mm)	L (mm)	L2 (mm)	L3 (mm)	$\varnothing D$ (mm)	G
ABT40	ABT SIDELOCK 16 X 63	16	63	65.4	23	-	48	M12
ABT40	ABT SIDELOCK 20 X 63	20	63	65.4	24	-	52	M16
ABT40	ABT SIDELOCK 25 X 90	25	90	65.4	24	25	50	M16
ABT40	ABT SIDELOCK 32 X 100	32	100	65.4	24	28	62	M16
ABT40	ABT SIDELOCK 40 X 100	40	100	65.4	25	28	62	M16

ABT50	ABT SIDELOCK 25 X 100	25	100	101.8	24	25	62	M16
ABT50	ABT SIDELOCK 25 X 150	25	150	101.8	24	25	62	M16
ABT50	ABT SIDELOCK 32 X 105	32	105	101.8	24	28	62	M16
ABT50	ABT SIDELOCK 32 X 150	32	150	101.8	24	28	62	M16
ABT50	ABT SIDELOCK 40 X 105	40	105	101.8	24	28	62	M16
ABT50	ABT SIDELOCK 40 X 150	40	150	101.8	25	28	62	M16

REDUCTION SOCKET

- MT (DIN 6383)

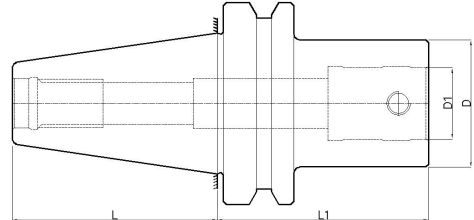


Type	Descriptions	Bore	L1 (mm)	L (mm)	ØD (mm)
ABT40	ABT REDUCTION SOCKET MT1X45	MT-1	45	65.4	25
ABT40	ABT REDUCTION SOCKET MT2X60	MT-2	60	65.4	32
ABT40	ABT REDUCTION SOCKET MT3X75	MT-3	75	65.4	40
ABT40	ABT REDUCTION SOCKET MT4X95	MT-4	95	65.4	48
ABT40	ABT REDUCTION SOCKET MT1X45	MT-1	45	101.8	25
ABT40	ABT REDUCTION SOCKET MT2X45	MT-2	45	101.8	32
ABT40	ABT REDUCTION SOCKET MT3X60	MT-3	60	101.8	40
ABT40	ABT REDUCTION SOCKET MT4X85	MT-4	85	101.8	48

BT MODULAR HOLDERS

Run Out
≤0.005

G 6.3
15000
RPM

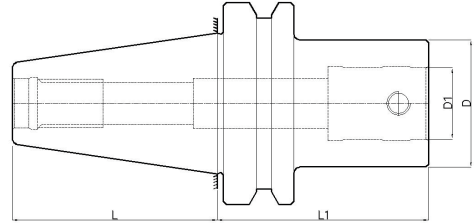


Shank Taper	Descriptions	Modular Type	L1 (mm)	L (mm)	ØD (mm)	BORE (D1)
BT40	BT40-CBK1X 085	CBK1	85	65.4	19	11
BT40	BT40-CBK1X 115	CBK1	115	65.4	19	11
BT40	BT40-CBK2X 085	CBK2	85	65.4	24	14
BT40	BT40-CBK2X 115	CBK2	115	65.4	24	14
BT40	BT40-CBK2X 145	CBK2	145	65.4	31	14
BT40	BT40-CBK3X 095	CBK3	95	65.4	31	18
BT40	BT40-CBK3X 125	CBK3	125	65.4	31	18
BT40	BT40-CBK3X 155	CBK3	155	65.4	31	18
BT40	BT40-CBK3X 185	CBK3	185	65.4	39	18
BT40	BT40-CBK4X 095	CBK4	95	65.4	39	22
BT40	BT40-CBK4X 125	CBK4	125	65.4	39	22
BT40	BT40-CBK4X 155	CBK4	155	65.4	49	22
BT40	BT40-CBK5X 095	CBK5	95	65.4	49	28
BT40	BT40-CBK5X 125	CBK5	125	65.4	49	28
BT40	BT40-CBK5X 155	CBK5	155	65.4	62	28
BT40	BT40-CBK6X 065	CBK6	65	65.4	62	36
BT40	BT40-CBK6X 095	CBK6	95	65.4	62	36
BT40	BT40-CBK6X 125	CBK6	125	65.4	62	36
BT40	BT40-CBK6X 155	CBK6	155	65.4	62	36
BT40	BT40-CBK6X 185	CBK6	185	65.4	62	36

BT MODULAR HOLDERS

Run Out
≤0.005

G 6.3
15000
RPM

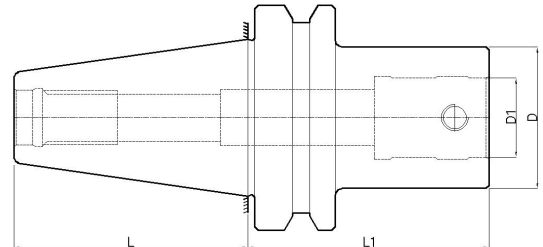


Shank Taper	Descriptions	Modular Type	L1 (mm)	L (mm)	ØD (mm)	BORE (D1)
BT50	BT50-CBK1X125	CBK1	125	101.8	19	11
BT50	BT50-CBK2X125	CBK2	125	101.8	24	14
BT50	BT50-CBK2X155	CBK2	155	101.8	24	14
BT50	BT50-CBK3X125	CBK3	125	101.8	31	18
BT50	BT50-CBK3X155	CBK3	155	101.8	31	18
BT50	BT50-CBK3X200	CBK3	200	101.8	31	18
BT50	BT50-CBK3X250	CBK3	250	101.8	31	18
BT50	BT50-CBK4X125	CBK4	125	101.8	39	22
BT50	BT50-CBK4X155	CBK4	155	101.8	39	22
BT50	BT50-CBK4X200	CBK4	200	101.8	39	22
BT50	BT50-CBK4X250	CBK4	250	101.8	39	22
BT50	BT50-CBK5X125	CBK5	125	101.8	49	28
BT50	BT50-CBK5X155	CBK5	155	101.8	49	28
BT50	BT50-CBK5X200	CBK5	200	101.8	49	28
BT50	BT50-CBK5X250	CBK5	250	101.8	49	28
BT50	BT50-CBK5X300	CBK5	300	101.8	49	28
BT50	BT50-CBK6X125	CBK6	125	101.8	62	36
BT50	BT50-CBK6X155	CBK6	155	101.8	62	36
BT50	BT50-CBK6X200	CBK6	200	101.8	62	36
BT50	BT50-CBK6X250	CBK6	250	101.8	62	36
BT50	BT50-CBK6X300	CBK6	300	101.8	62	36

SK MODULAR ADAPTERSK (DIN 69871)

Run Out
≤0.005

G 6.3
15000
RPM

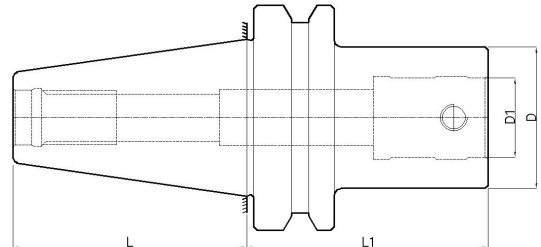


Shank Taper	Descriptions	Modular Type	L1 (mm)	L (mm)	ØD (mm)	BORE (D1)
SK40	SK40 CKB1 X 90	CBK1	90	68	19	11
SK40	SK40 CKB1 X 125	CBK1	125	68	19	11
SK40	SK40 CKB1 X 150	CBK1	150	68	19	11
SK40	SK40CKB2 X 90	CBK2	90	68	24	14
SK40	SK40CKB2 X 125	CBK2	125	68	24	14
SK40	SK40CKB2 X 150	CBK2	150	68	24	14
SK40	SK40CKB3 X 90	CBK3	90	68	31	18
SK40	SK40CKB3 X 125	CBK3	125	68	31	18
SK40	SK40CKB3 X 150	CBK3	150	68	31	18
SK40	SK40CKB4 X 90	CBK4	90	68	39	22
SK40	SK40CKB4 X 125	CBK4	125	68	39	22
SK40	SK40CKB4 X 150	CBK4	150	68	39	22
SK40	SK40CKB5 X 90	CBK5	90	68	49	28
SK40	SK40CKB5 X 125	CBK5	125	68	49	28
SK40	SK40CKB5 X 150	CBK5	150	68	49	28
SK40	SK40CKB6 X 90	CBK6	90	68	62	36
SK40	SK40CKB6 X 125	CBK6	125	68	62	36
SK40	SK40CKB6 X 150	CBK6	150	68	62	36

SK MODULAR ADAPTERSK (DIN 69871)

Run Out
≤0.005

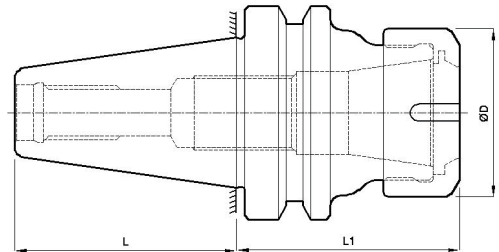
G 6.3
15000
RPM



Shank Taper	Descriptions	Modular Type	L1 (mm)	L (mm)	ØD (mm)	BORE (D1)
SK50	SK50-CBK1 X 125	CBK1	125	102	19	11
SK50	SK50-CBK1 X 155	CBK1	155	102	19	11
SK50	SK50-CBK2 X 125	CBK2	125	102	24	14
SK50	SK50-CBK2 X 155	CBK2	155	102	24	14
SK50	SK50-CBK3 X 125	CBK3	125	102	31	18
SK50	SK50-CBK3 X 155	CBK3	155	102	31	18
SK50	SK50-CBK4 X 125	CBK4	125	102	39	22
SK50	SK50-CBK4 X 155	CBK4	155	102	39	22
SK50	SK50-CBK5 X 125	CBK5	125	102	49	28
SK50	SK50-CBK5 X 155	CBK5	155	102	49	28
SK50	SK50-CBK5 X 200	CBK5	200	102	49	28
SK50	SK50-CBK6 X 125	CBK6	125	102	62	36
SK50	SK50-CBK6 X 155	CBK6	155	102	62	36
SK50	SK50-CBK6 X 200	CBK6	200	102	62	36

COLLET CHUCK ADAPTER

- ER (DIN 6499)

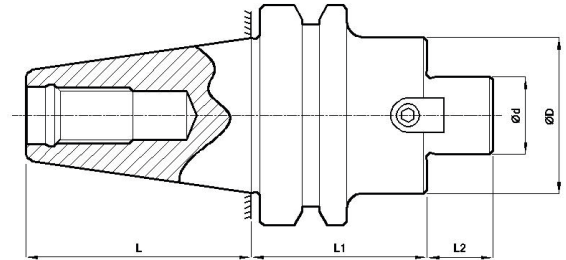


Shank Taper	Descriptions	Suitable Collet	L1 (mm)	L (mm)	ØD (mm)	NUT
SK40	COLLET CHUCK ER16 X 70	ER 16	70	68.4	28	A (Hex.Type)
SK40	COLLET CHUCK ER16 X 100	ER 16	100	68.4	28	A (Hex.Type)
SK40	COLLET CHUCK ER16 X 150	ER 16	150	68.4	28	A (Hex.Type)
SK40	COLLET CHUCK ER20 X 70	ER 20	70	68.4	34	A (Hex.Type)
SK40	COLLET CHUCK ER20 X 100	ER 20	100	68.4	34	A (Hex.Type)
SK40	COLLET CHUCK ER20 X 150	ER 20	150	68.4	34	A (Hex.Type)
SK40	COLLET CHUCK ER25 X 70	ER 25	70	68.4	42	UM (Round Type)
SK40	COLLET CHUCK ER25 X 100	ER 25	100	68.4	42	UM (Round Type)
SK40	COLLET CHUCK ER25 X 150	ER 25	150	68.4	42	UM (Round Type)
SK40	COLLET CHUCK ER32 X 70	ER 32	70	68.4	50	UM (Round Type)
SK40	COLLET CHUCK ER32 X 100	ER 32	100	68.4	50	UM (Round Type)
SK40	COLLET CHUCK ER32 X 150	ER 32	150	68.4	50	UM (Round Type)
SK40	COLLET CHUCK ER40 X 80	ER 40	80	68.4	63	UM (Round Type)
SK40	COLLET CHUCK ER40 X 100	ER 40	100	68.4	63	UM (Round Type)
SK40	COLLET CHUCK ER40 X 150	ER 40	150	68.4	63	UM (Round Type)

SK50	COLLET CHUCK ER16 X 100	ER 16	100	101.75	28	A (Hex.Type)
SK50	COLLET CHUCK ER16 X 150	ER 16	150	101.75	28	A (Hex.Type)
SK50	COLLET CHUCK ER20 X 100	ER 20	100	101.75	34	A (Hex.Type)
SK50	COLLET CHUCK ER20 X 150	ER 20	150	101.75	34	A (Hex.Type)
SK50	COLLET CHUCK ER25 X 100	ER 25	100	101.75	42	UM (Round Type)
SK50	COLLET CHUCK ER25 X 150	ER 25	150	101.75	42	UM (Round Type)
SK50	COLLET CHUCK ER32 X 100	ER 32	100	101.75	50	UM (Round Type)
SK50	COLLET CHUCK ER32 X 150	ER 32	150	101.75	50	UM (Round Type)
SK50	COLLET CHUCK ER32 X 200	ER 32	200	101.75	50	UM (Round Type)
SK50	COLLET CHUCK ER40 X 100	ER 40	100	101.75	63	UM (Round Type)
SK50	COLLET CHUCK ER40 X 150	ER 40	150	101.75	63	UM (Round Type)
SK50	COLLET CHUCK ER40 X 200	ER 40	200	101.75	63	UM (Round Type)

FACE MILL ARBOUR

- FMA (DIN 6357)

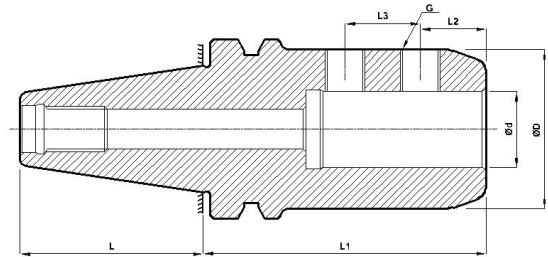


Type	Descriptions	Cutter Bore Diameter $\varnothing d$ (mm)	L1 (mm)	L (mm)	L2 (mm)	$\varnothing D$ (mm)
SK40	FACE MILL ARBOUR 22 X 50	22	50	68.4	19	45
SK40	FACE MILL ARBOUR 22 X 100	22	100	68.4	19	45
SK40	FACE MILL ARBOUR 22 X 150	22	150	68.4	19	45
SK40	FACE MILL ARBOUR 27 X 50	27	50	68.4	21	52
SK40	FACE MILL ARBOUR 27 X 100	27	100	68.4	21	52
SK40	FACE MILL ARBOUR 27 X 150	27	150	68.4	21	52
SK40	FACE MILL ARBOUR 32 X 70	32	70	68.4	24	58
SK40	FACE MILL ARBOUR 32 X 100	32	100	68.4	24	58
SK40	FACE MILL ARBOUR 32 X 150	32	150	68.4	24	58
SK40	FACE MILL ARBOUR 40 X 70	40	70	68.4	27	63
SK40	FACE MILL ARBOUR 40 X 100	40	100	68.4	27	63
SK40	FACE MILL ARBOUR 40 X 150	40	150	68.4	27	63

SK50	FACE MILL ARBOUR 22 X 100	22	100	101.75	19	45
SK50	FACE MILL ARBOUR 22 X 150	22	150	101.75	19	45
SK50	FACE MILL ARBOUR 22 X 200	22	200	101.75	19	45
SK50	FACE MILL ARBOUR 27 X 100	27	100	101.75	21	52
SK50	FACE MILL ARBOUR 27 X 150	27	150	101.75	21	52
SK50	FACE MILL ARBOUR 27 X 200	27	200	101.75	21	52
SK50	FACE MILL ARBOUR 32 X 100	32	100	101.75	24	58
SK50	FACE MILL ARBOUR 32 X 150	32	150	101.75	24	58
SK50	FACE MILL ARBOUR 40 X 100	40	100	101.75	27	70
SK50	FACE MILL ARBOUR 40 X 150	40	150	101.75	27	70

SIDELOCK ARBOR

- SLA (DIN 6359)



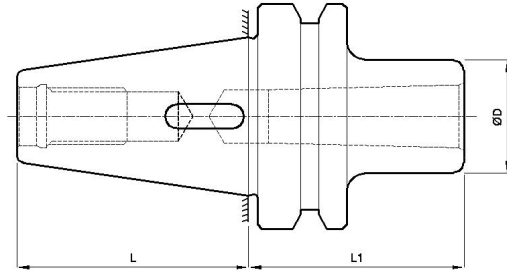
PIC. 2

Type	Descriptions	Bore $\varnothing d$ (mm)	L1 (mm)	L (mm)	L2 (mm)	L3 (mm)	$\varnothing D$ (mm)	G
SK40	SIDELOCK 16x63	16	63	68.4	23	-	48	M12
SK40	SIDELOCK 20x63	20	63	68.4	24	-	52	M16
SK40	SIDELOCK 25x100	25	100	68.4	24	25	50	M16
SK40	SIDELOCK 32x100	32	100	68.4	24	28	62	M16
SK40	SIDELOCK 40x110	40	110	68.4	25	28	62	M16

SK50	SIDELOCK 25X100	25	100	101.75	24	25	62	M16
SK50	SIDELOCK 25X150	25	150	101.75	24	25	62	M16
SK50	SIDELOCK 32X105	32	105	101.75	24	28	62	M16
SK50	SIDELOCK 32X150	32	150	101.75	24	28	62	M16
SK50	SIDELOCK 40X105	40	105	101.75	25	28	62	M16
SK50	SIDELOCK 40X150	40	150	101.75	25	28	62	M16

REDUCTION SOCKET

-MT (DIN 6383)



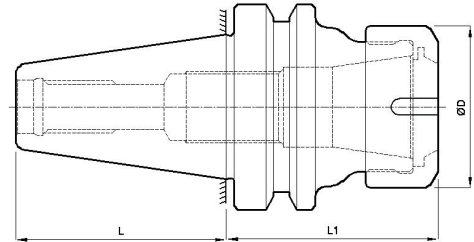
Type	Descriptions	Bore	L1 (mm)	L (mm)	ØD (mm)
SK40	REDUCTION SOCKET MT1 X45	MT-1	45	68.4	M12
SK40	REDUCTION SOCKET MT2 X60	MT-2	60	68.4	M16
SK40	REDUCTION SOCKET MT3 X75	MT-3	75	68.4	M16
SK40	REDUCTION SOCKET MT4 X95	MT-4	95	68.4	M16
SK50	REDUCTION SOCKET MT1 X45	MT-1	45	101.75	25
SK50	REDUCTION SOCKET MT2 X45	MT-2	45	101.75	32
SK50	REDUCTION SOCKET MT3 X60	MT-3	60	101.75	40
SK50	REDUCTION SOCKET MT4 X85	MT-4	85	101.75	48
SK50	REDUCTION SOCKET MT5 X100	MT-5	100	101.75	48

COLLET CHUCK ADAPTER

- ER (DIN 6499)

Run Out
≤0.005

G 6.3
15000
RPM

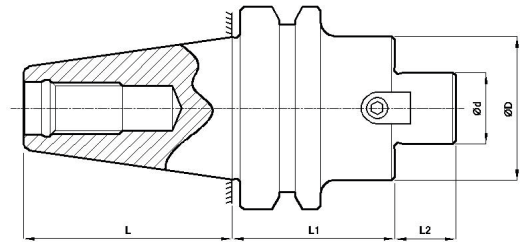


Shank Taper	Descriptions	Suitable Collet	L1 (mm)	L (mm)	ØD (mm)	NUT
CAT40	COLLET CHUCK ER16 X 70	ER 16	70	68.24	28	A (Hex.Type)
CAT40	COLLET CHUCK ER16 X 100	ER 16	100	68.24	28	A (Hex.Type)
CAT40	COLLET CHUCK ER16 X 150	ER 16	150	68.24	28	A (Hex.Type)
CAT40	COLLET CHUCK ER20 X 70	ER 20	70	68.24	34	A (Hex.Type)
CAT40	COLLET CHUCK ER20 X 100	ER 20	100	68.24	34	A (Hex.Type)
CAT40	COLLET CHUCK ER20 X 150	ER 20	150	68.24	34	A (Hex.Type)
CAT40	COLLET CHUCK ER25 X 70	ER 25	70	68.24	42	UM (Round Type)
CAT40	COLLET CHUCK ER25 X 100	ER 25	100	68.24	42	UM (Round Type)
CAT40	COLLET CHUCK ER25 X 150	ER 25	150	68.24	42	UM (Round Type)
CAT40	COLLET CHUCK ER32 X 70	ER 32	70	68.24	50	UM (Round Type)
CAT40	COLLET CHUCK ER32 X 100	ER 32	100	68.24	50	UM (Round Type)
CAT40	COLLET CHUCK ER32 X 150	ER 32	150	68.24	50	UM (Round Type)
CAT40	COLLET CHUCK ER40 X 70	ER 40	70	68.24	63	UM (Round Type)
CAT40	COLLET CHUCK ER40 X 100	ER 40	100	68.24	63	UM (Round Type)
CAT40	COLLET CHUCK ER40 X 150	ER 40	150	68.24	63	UM (Round Type)

FACE MILL ARBOUR - FMA (DIN 6357)

Run Out
≤0.005

G 6.3
15000
RPM

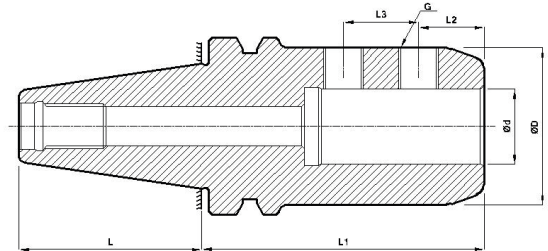


Shank Taper	Descriptions	Cutter Bore Diameter	L1 (mm)	L (mm)	ØD (mm)	NUT
CAT40	FACE MILL ARBOUR 22 X 50	22	50	68.24	19	45
CAT40	FACE MILL ARBOUR 22 X 100	22	100	68.24	19	45
CAT40	FACE MILL ARBOUR 22 X 150	22	150	68.24	19	45
CAT40	FACE MILL ARBOUR 27 X 50	27	50	68.24	21	52
CAT40	FACE MILL ARBOUR 27 X 100	27	100	68.24	21	52
CAT40	FACE MILL ARBOUR 27 X 150	27	150	68.24	21	52
CAT40	FACE MILL ARBOUR 32 X 70	32	70	68.24	24	58
CAT40	FACE MILL ARBOUR 32 X 100	32	100	68.24	24	58
CAT40	FACE MILL ARBOUR 32 X 150	32	150	68.24	24	58
CAT40	FACE MILL ARBOUR 40 X 70	40	70	68.24	27	63
CAT40	FACE MILL ARBOUR 40 X 100	40	100	68.24	27	63
CAT40	FACE MILL ARBOUR 40 X 150	40	150	68.24	27	63

SIDE LOCK ARBOR

-SLA (DIN 6359)

Run Out $\leq 0,005$ G 6.3 15000 RPM

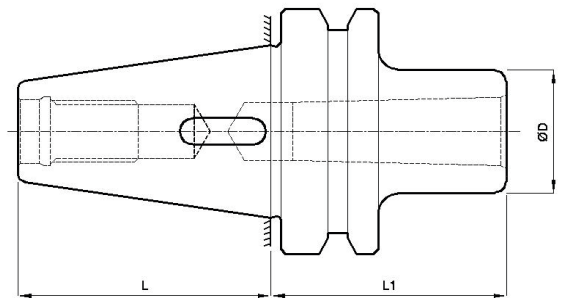


Shank Taper	Descriptions	Bore Ød (mm)	L1 (mm)	L (mm)	L2 (mm)	L3 (mm)	ØD (mm)	G
CAT40	SIDELOCK 16x 63	16	63	68.24	23	-	48	M12
CAT40	SIDELOCK 20x 63	20	63	68.24	24	-	52	M16
CAT40	SIDELOCK 25x 90	25	90	68.24	23	25	50	M16
CAT40	SIDELOCK 32x 100	32	100	68.24	23	28	62	M16
CAT40	SIDELOCK 40x 100	40	100	68.24	25	28	62	M16

REDUCTION SOCKET

-MT (DIN 6383)

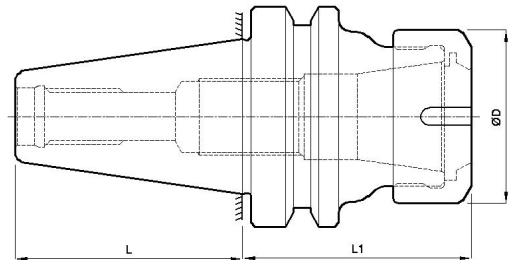
Run Out $\leq 0,005$ G 6.3 15000 RPM



Shank Taper	Descriptions	Bore	L1 (mm)	L (mm)	ØD (mm)
CAT40	REDUCTION SOCKET MT1X45	MT-1	45	68.24	25
CAT40	REDUCTION SOCKET MT2X60	MT-2	60	68.24	32
CAT40	REDUCTION SOCKET MT3X75	MT-3	75	68.24	40
CAT40	REDUCTION SOCKET MT4X95	MT-4	95	68.24	48

COLLET CHUCK ADAPTER

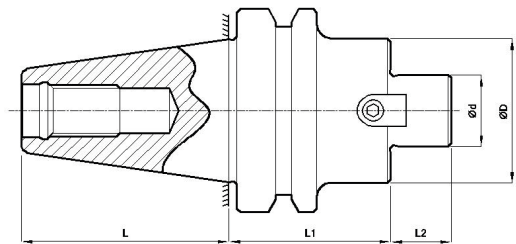
- ER (DIN 6499)



Shank Taper	Descriptions	Suitable Collet	L1 (mm)	L (mm)	ØD (mm)	NUT
ISO40	ISO40 COLLET CHUCK ER-25 X 070	ER 25	70	68.24	28	UM (Round Type)
ISO40	ISO40 COLLET CHUCK ER-32 X 070	ER 32	70	68.24	28	UM (Round Type)
ISO40	ISO40 COLLET CHUCK ER-40 X 070	ER 40	70	68.24	34	UM (Round Type)
ISO50	ISO50 COLLET CHUCK ER-25 X 100	ER 25	100	101.8	28	UM (Round Type)
ISO50	ISO50 COLLET CHUCK ER-32 X 100	ER 32	100	101.8	28	UM (Round Type)
ISO50	ISO50 COLLET CHUCK ER-40 X 100	ER 40	100	101.8	34	UM (Round Type)

FACE MILL ARBOUR

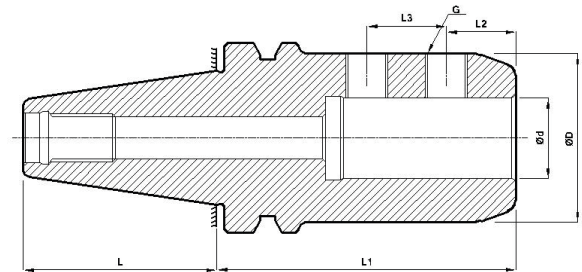
- FMA (DIN 6357)



Type	Descriptions	Cutter Bore Diameter Ød (mm)	L1 (mm)	L (mm)	L2 (mm)	ØD (mm)
ISO40	ISO40 FACE MILL ARBOUR 22 X 035	22	35	68.24	19	45
ISO40	ISO40 FACE MILL ARBOUR 27 X 035	27	35	68.24	19	45
ISO40	ISO40 FACE MILL ARBOUR 32 X 040	32	40	68.24	19	45
ISO40	ISO40 FACE MILL ARBOUR 40 X 040	40	40	68.24	21	52
ISO50	ISO50 FACE MILL ARBOUR 22 X 100	22	100	101.8	19	45
ISO50	ISO50 FACE MILL ARBOUR 27 X 100	27	100	101.8	19	45
ISO50	ISO50 FACE MILL ARBOUR 32 X 100	32	100	101.8	19	45
ISO50	ISO50 FACE MILL ARBOUR 40 X 100	40	100	101.8	21	52

SIDELOCK ARBOR

- SLA (DIN 6359)

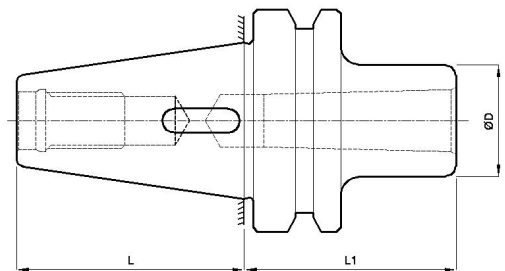


PIC. 2

Type	Descriptions	Bore Ød (mm)	L1 (mm)	L (mm)	L2 (mm)	L3 (mm)	ØD (mm)	G
ISO40	ISO40 SIDE LOCK 25 X 090	25	90	68.24	23	-	48	M12
ISO40	ISO40 SIDE LOCK 32 X 100	32	100	68.24	24	-	52	M16
ISO40	ISO40 SIDE LOCK 40 X 100	40	100	68.24	24	25	62	M16
ISO50	ISO50 SIDE LOCK 25 X 100	25	100	101.8	23	-	48	M12
ISO50	ISO50 SIDE LOCK 32 X 100	32	100	101.8	24	-	52	M16
ISO50	ISO50 SIDE LOCK 40 X 100	40	100	101.8	24	25	62	M16

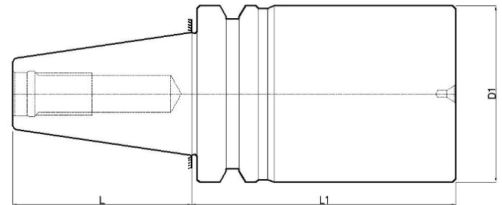
REDUCTION SOCKET

- MT (DIN 6383)



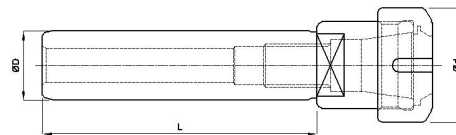
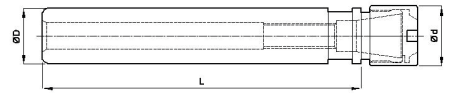
Type	Descriptions	Bore	L1 (mm)	L (mm)	ØD (mm)
ISO40	ABT REDUCTION SOCKET MT1X45	MT-1	45	68.24	25
ISO40	ABT REDUCTION SOCKET MT2X60	MT-2	60	68.24	32
ISO40	ABT REDUCTION SOCKET MT3X75	MT-3	75	68.24	40
ISO40	ABT REDUCTION SOCKET MT4X95	MT-4	95	68.24	48
ISO50	ISO50 REDUCTION SOCKET MT1X 45	MT-1	45	101.8	25
ISO50	ISO50 REDUCTION SOCKET MT2X 60	MT-2	60	101.8	32
ISO50	ISO50 REDUCTION SOCKET MT3X 70	MT-3	75	101.8	40
ISO50	ISO50 REDUCTION SOCKET MT4 X 90	MT-4	95	101.8	48

BORING BAR BLANK HOLDERS



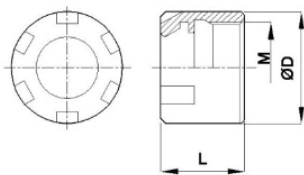
Type	Descriptions	D1 (mm)	L1 (mm)	L (mm)
BT40	BT40 BORING BAR BLANK 63.5 X 150	63.5	150	65.4
BT40	BT40 BORING BAR BLANK 63.5 X 250	63.5	250	65.4
BT50	BT50 BORING BAR BLANK 80 X 150	80	150	101.4
BT50	BT50 BORING BAR BLANK 80 X 250	80	250	101.4
HSK-A-63	HSK A-63 BLANK 75 X 160	63	160	32
HSK-A-63	HSK A-63 BLANK 75 X 250	63	250	32
HSK-A-100	HSK A-100 BLANK 100 X 250	80	250	50

BABY COLLET /CYLINDRICAL CHUCK

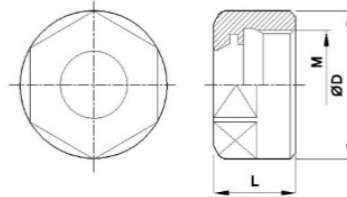


Shank Taper	Descriptions	ØD (mm)	L (mm)	Suitable Collet	ØD (mm)	NUT
BABY CHUCK	Ø8 X ER8 M X 100L	8	100	ER 8	12	M
BABY CHUCK	Ø10 X ER8 M X 100L	10	100	ER 8	12	M
BABY CHUCK	Ø12 X ER8 M X 100L	12	100	ER 8	12	M
BABY CHUCK	Ø12 X ER11 A/M X 100L	12	100	ER 11	16	A/M
BABY CHUCK	Ø12 X ER11 A/M X 150L	12	150	ER 11	16	A/M
BABY CHUCK	Ø16 X ER11 A/M X 100L	16	100	ER 11	16	A/M
BABY CHUCK	Ø16 X ER11 A/M X 150L	16	150	ER 11	16	A/M
BABY CHUCK	Ø16 X ER16 A/M X 100L	16	100	ER 16	22	A/M
BABY CHUCK	Ø16 X ER16 A/M X 150L	16	150	ER 16	22	A/M
BABY CHUCK	Ø20 X ER16 A/M X 100L	20	100	ER 16	22	A/M
BABY CHUCK	Ø20 X ER16 A/M X 150L	20	150	ER 16	22	A/M
BABY CHUCK	Ø20 X ER20 A/M X 100L	20	100	ER 20	28	A/M
BABY CHUCK	Ø20 X ER20 A/M X 150L	20	150	ER 20	28	A/M
CYL.CHUCK	Ø25 X ER25 X 100L	25	100	ER 25	42	UM
CYL.CHUCK	Ø25 X ER32 X 100L	25	100	ER 32	50	UM
CYL.CHUCK	Ø32 X ER25 X 100L	32	100	ER 25	42	UM
CYL.CHUCK	Ø32 X ER32 X 65L	32	65	ER 32	50	UM
CYL.CHUCK	Ø32 X ER32 X 100L	32	100	ER 32	50	UM
CYL.CHUCK	Ø32 X ER32 X 150L	32	150	ER 32	50	UM
CYL.CHUCK	Ø32 X ER40 X 100L	32	100	ER 40	63	UM
CYL.CHUCK	Ø40 X ER25 X 100L	40	100	ER 25	42	UM
CYL.CHUCK	Ø40 X ER32 X 100L	40	100	ER 32	50	UM
CYL.CHUCK	Ø40 X ER32 X 150L	40	150	ER 32	50	UM
CYL.CHUCK	Ø40 X ER40 X 100L	40	100	ER 40	63	UM
CYL.CHUCK	MT3 X ER32 (Draw bolt type)	-	-	ER 32	50	UM
CYL.CHUCK	MT3 X ER40 (Draw bolt type)	-	-	ER 40	63	UM
CYL.CHUCK	MT4 X ER32 (Draw bolt type)	-	-	ER 32	50	UM
CYL.CHUCK	MT4 X ER40 (Draw bolt type)	-	-	ER 40	63	UM

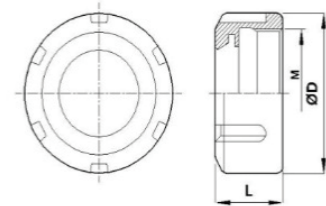
**ER
NUT**



**M TYPE
PIC. 3**



**HEX TYPE
PIC. 2**



**STANDARD (ROUND TYPE SLOTTED)
PIC. 1**

Description	Type	ØD (mm)	L (mm)	M	PIC.
NUTER11M	MINI	16	12	M13X0.75	3
NUTER11A	HEXAGONAL	19	16	M14 X 075	2
NUTER16M	MINI	22	18	M19X1	3
NUTER16 A	HEXAGONAL	28	17.5	M22X1.5	2
NUTER20M	MINI	28	19.5	M24X1.0	3
NUTER20 A	HEXAGONAL	34	19	M25X1.5	2
NUTER25UM	Round & Slotted	42	20	M32X1.5	1
NUTER32UM	Round & Slotted	50	22.5	M40X1.5	1
NUTER40UM	Round & Slotted	63	25.5	M50X1.5	1

PULL STUD

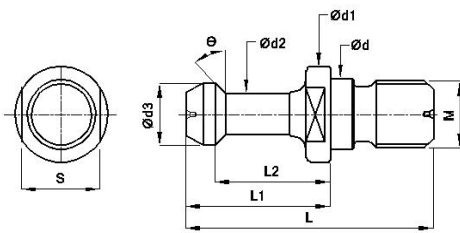


FIG. 1

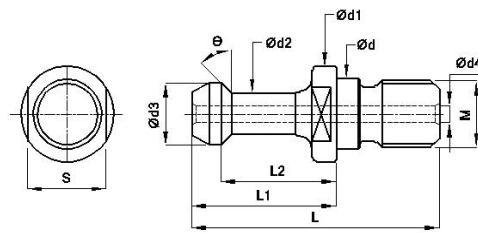


FIG. 2

Description	Angle	Type	M	ØD (mm)	ØD1 (mm)	ØD2 (mm)	ØD3 (mm)	L1 (mm)	L (mm)	S (mm)
BT30	30°/45°	Std./T.C.	M12	13	16	7	11	23	43	12
BT40	45°	Std./T.C.	M16	17	23	10	15	35	60	19
BT50	30°/45°/90°	Std./T.C.	M24	25	38	17	23	45	85	30
SK40	15°	Std.	M16	17	23	14	19	26	54	19
SK50	15°	Std.	M24	25	36	21	28	34	74	30
CAT40	45°	Std./T.C.	5/8-11TPI	17	22.5	10	14.9	33	57	19

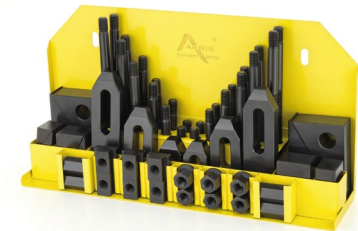
LOCKING DEVICE

Description	W (kg.)
BT 30	3,5
BT 40	4,5
BT 50	11,0



CLAMPING KIT (58 Pcs.)

Description	W (kg.)
T14-12	12,2
T16-12	12,2
T18-12	12,2



CHAMFER CUTTER

Description
D25-45'-L200 - TCMT16
D12-45'-L100 - TCMT11
D16-45'-L100 - TCMT11
D20-45'-L100 - TCMT16
D20-45'-L200 - TCMT16
D25-45'-L100 - TCMT16



SPANNER

Description
SPANNERER08/11/16/20 MTYPE
SPANNERER25/32UMTYPE
SPANNERER40UMTYPE
SPANNERER25/32C-TYPE
SPANNERER40C-TYPE



APMT INSERTED CUTTING BODY



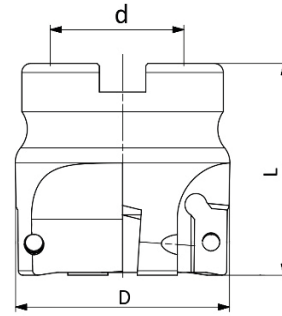
Part Number	Shank Dia. d (mm)	Cutter Dia. D (mm)	Overall Length (L) Range	Screw	Key
C15-16-150-2T - AP11	15	16	150, 200	M2.5x6	T-8
C16-16-150-2T - AP11	16	16	150, 200, 250, 300		
C19-20-150-2T - AP11	19	20	150, 200		
C20-20-150-2T - AP11	20	20	150, 200, 250, 300		
C24-25-150-3T - AP11	24	25	150, 200		
C25-25-150-3T - AP11	25	25	150, 200, 250, 300		
C32-32-150-3T - AP11	32	32	150, 200		
C24-25-150-2T - AP16	24	25	150, 200	M4x9	T-15
C25-25-150-2T - AP16	25	25	150, 200, 250, 300		
C32-32-150-3T - AP16	32	32	150, 200, 250, 300		

LNMU INSERTED CUTTING BODY



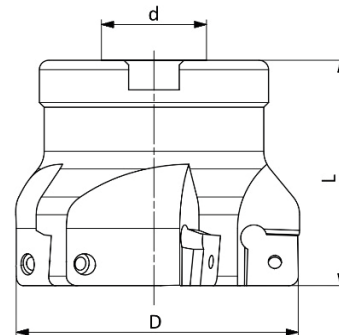
Part Number	Shank Dia. d (mm)	Cutter Dia. D (mm)	Overall Length (L) Range	Screw	Key
AXN03RD16d16-150LT2	16	16	150	M2.5x8	T-8
AXN03RD16d16-200LT2	16	16	200		
AXN03RD20d20-150LT3	20	20	150		
AXN03RD20d20-200LT3	20	20	200		
AXN03RD25d25-150LT4	25	25	150		
AXN03RD25d25-200LT4	25	25	200		
AXN03RD25d25-250LT4	25	25	250		
AXN03RD32d32-150LT5	32	32	150		
AXN03RD32d32-200LT5	32	32	200		
AXN03RD32d32-250LT5	32	32	250		

APMT MILLING CUTTER



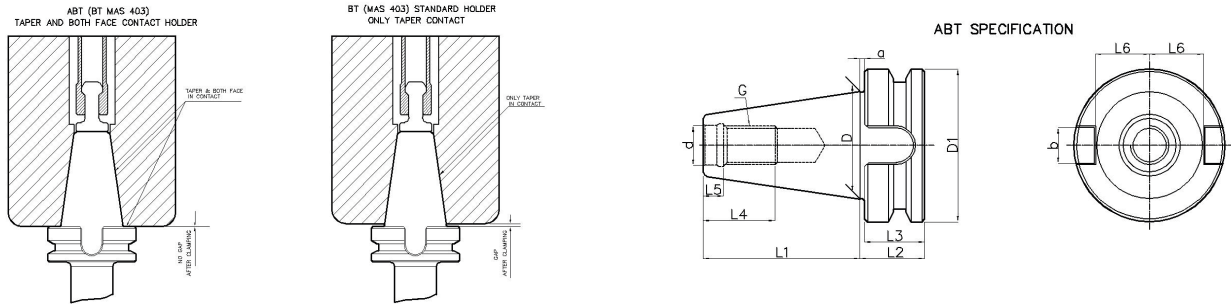
Sr. No.	Part Number	Cutter Dia. D (mm)	Bore (D)	L	INSERT	No. of Pocket
1	BAP400-50-22-4T	50	22	50	APMT16	4
2	BAP400-63-22-4T	63	22	50	APMT16	4
3	BAP400-80-27-6T	80	27	50	APMT16	6
4	BAP400-100-32-6T	100	32	60	APMT16	6

SDMT MILLING CUTTER



Sr. No.	Part Number	Cutter Dia. D (mm)	Bore (D)	L	INSERT	No. of Pocket
1	SD12-50-22-4T	50	22	45	SDMT12	4
2	SD12-63-22-5T	63	22	55	SDMT12	5
3	SD12-80-27-6T	80	27	45	SDMT12	6
4	SD12-100-32-6T	100	32	55	SDMT12	6

TAPPER STD. OF ABT



Material : Case Hardened 20MnCr5 **Hardness :** 55-60HRC **Accuracy :** AT3 class tapper 7:24 taper

Tapper	AT3	D	G	D	D1	A
ABT30	(+) 0.002	12.5	M12	31.75	46	1
ABT40	(+) 0.003	17	M16	44.45	63	1
ABT50	(+) 0.004	25	M24	69.85	100	1.5

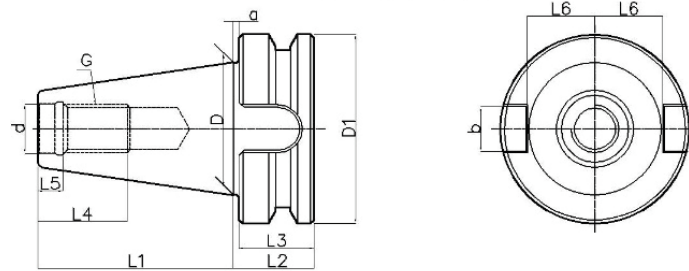
Tapper	B	L1	L2	L3	L4	L5	L6
ABT30	16.1	48.4	21	20	24	7	16.3
ABT40	16.1	65.4	27	26	32	9	22.6
ABT50	25.7	101.8	38	36.5	47	13	35.4

HYDROGRIP HOLDER TECH. DATA OF TORQUE TRANSFERABLE

Clamping Dia (mm)	6	8	10	12	14	16	18	20	25	32
Min. Clamping Depth (mm)	28	28	33	38	38	41	41	43	49	53
Transferable Torque (N-m)	15	20	40	80	110	180	240	320	400	600

BT (MAS 403) SPECIFICATION

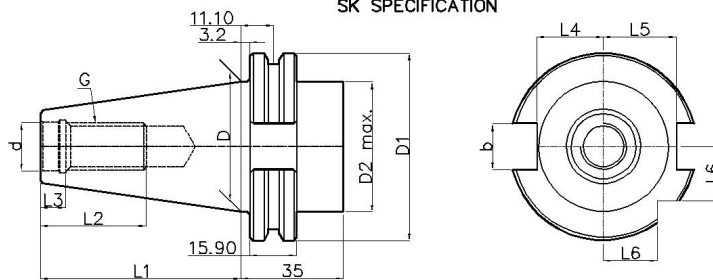
BT SPECIFICATION



Taper	AT3	d	G	D	D1	a	b	L1	L2	L3	L4	L5	L6
BT30	(+)0.002	12.5	M12	31.75	46	2	16.1	48.4	22	20	24	7	16.3
BT40	(+)0.003	17	M16	44.45	63	2	16.1	65.4	27	25	32	9	22.6
BT50	(+)0.004	25	M24	69.85	100	3	25.7	101.4	38	35	47	13	35.4

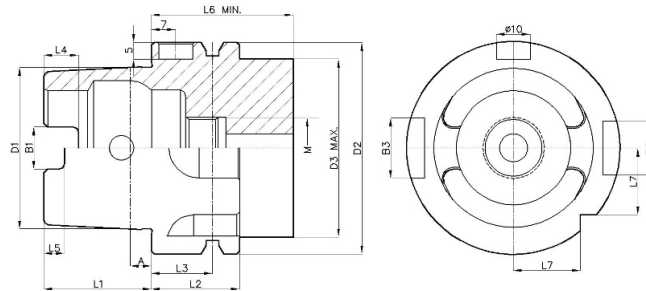
SK (DIN 69871) SPECIFICATION

SK SPECIFICATION



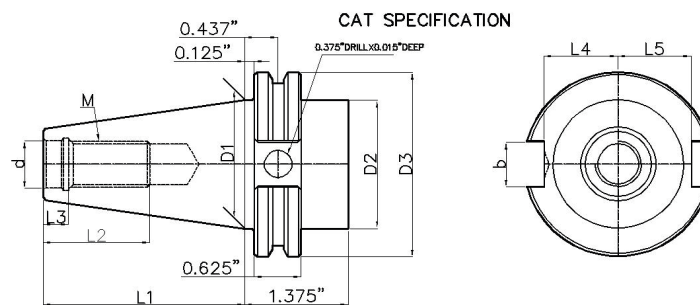
Taper	AT3	d	G	D	D1	a	b	L1	L2	L3	L4	L5	L6
SK40	(+)0.003	17	M16	44.45	63.55	3.2	16.1	68.40	32	8.2	22.80	25.00	18.5
SK50	(+)0.004	25	M24	69.85	97.50	3.2	25.7	101.75	47	11.5	35.50	37.70	30.0

HSK-A HOLDER (DIN 69893-1) SPECIFICATION



Taper	D1	D2	D3	a	b1	b2	b3	M	L1	L2	L3	L4	L5	L6	L7
HSK A-50	38	50	42	5.00	10.54	12.0	14.0	M16X1	25	26	18	8	4.5	42.0	15.3
HSK A-63	48	63	53	6.30	12.54	16.0	18.0	M18X1	32	26	18	10	6.0	42.0	20.0
HSK A-100	75	100	88	10.00	20.02	20.0	22.0	M24X1.5	50	29	20	15	10.0	45.0	31.5

CAT (ANSI B5.5) SPECIFICATION



Taper	AT3	d	M (UNC)	D1	D2	D3	D4	b	L1	L2	L3	L4	L5
CAT40	(+)0.003	0.641"	5/8-11"	1.750"	1.750"	2.500"	2.863"	0.645"	2.687"	1.12"	0.188"	0.985"	0.890"
CAT50	(+)0.004	1.031"	1"-8"	2.750"	2.750"	3.875"	4.238"	1.020"	4.000"	1.75"	0.250"	1.485"	1.390"



ARRIS TOOLING



Factory :

📍 Plot No 9+10, Urja Industrial Aread - 10 Pardi - Padvla Road,
Lodhika Pardi, Rajkot - 360024

Contact Us :

✉ sales@arristooling.com | ✉ info@arristooling.com
🌐 www.arristooling.com | 📞 +91 99044 02440